

AGENDA FOR BOARD OF DIRECTORS
AUBURN SCHOOL DISTRICT NO. 408
Monday, June 22, 2015

- I. TIME AND PLACE
 - 1. 7 p.m. at the James P. Fugate Administration Building
- II. ROLL CALL
 - 1. Roll call of board members
- III. PLEDGE OF ALLEGIANCE
- IV. AUDIENCE PARTICIPATION
 - 1. Written communications
 - 2. Scheduled communications
 - 3. Unscheduled communications
 - 4. Community groups and organizations
- V. LEGISLATIVE UPDATE
- VI. STUDENT PARTICIPATION
 - 1. Requests for travel
- VII. SCHOOL PROGRAMS AND STUDENT ACHIEVEMENT
 - 1. Advanced placement government and politics comparative curriculum—second reading
 - 2. 2014-15 Career and technical education curriculum review for agriculture, jewelry, visual communication, and video gaming and interactive media—second reading
 - 3. 2015-16 WIAA resolution
 - 4. Summer 2015 athletic program
 - 5. 2015-16 federal and state grant allocation
 - 6. 2015-16 highly capable and state transitional bilingual plan
- VIII. PERSONNEL
 - 1. Certificated and classified personnel report
 - 2. Requests for travel
- IX. BUILDING PROGRAM
 - 1. Auburn High School network integration project
 - 2. Auburn High School modernization and reconstruction project

X. FINANCE

1. Vouchers
2. Financial statements
3. 2015-16 budget hearing
4. 2015-16 budget adoption-resolution no. 1206
5. Comprehensive Annual Financial Report

XI. DIRECTORS

1. Approval of minutes
2. Special board meeting
3. Discussion
4. Executive session

LEGISLATIVE UPDATE

The board will discuss legislative items.

STUDENT PARTICIPATION

1. Requests for Travel

- a. Ten Auburn Mountainview High School students requested permission to travel to Zillah, Friday to Sunday, June 19-21. The purpose of the trip was to compete in the Zillah Basketball Tournament. Lodging and meals were at the home of Terry and Twyla Ostrander and travel was by private vehicles. All expenses will be paid by ASB funds. Tom Ostrander, Auburn Mountainview High School coach, requested permission to accompany the students. A substitute was not needed. *By prior administrative approval.*
- b. Ten Auburn Mountainview High School students requested permission to travel to Centralia, Friday to Sunday, June 19-21. The purpose of the trip was to compete in the Summer League Girls' Basketball Tournament. Lodging and meals were at the Great Wolf Lodge and travel was by private vehicles. All expenses will be paid by Booster Club funds. Dustin DePiano and Nneka Payne, Auburn Mountainview High School coaches, requested permission to accompany the students. Substitutes were not needed. *By prior administrative approval.*

Letitia Zaragoza, parent chaperone, requested permission to accompany the students.
- c. Twelve Auburn Riverside High School students request permission to travel to Corvallis, Oregon, Sunday to Wednesday, June 28-July 1. The purpose of the trip is to attend Wrestling Camp. Lodging and meals will be at Oregon State University and travel will be by private vehicles. All expenses will be paid by ASB funds. Kyle Jones and Eric Jones, Auburn Riverside High School coaches, request permission to accompany the students. Substitutes will not be needed.
- d. Eighteen Auburn Mountainview High School students request permission to travel to Pullman, Monday to Thursday, June 29-July 2. The purpose of the trip is to attend the Washington State University Basketball Camp. Lodging and meals will be at WSU and travel will be by private vehicles. All expenses will be paid by personal funds. Thomas Ostrander and Phil Blas, Auburn Mountainview High School coaches, request permission to accompany the students. Substitutes will not be needed.
- e. Thirteen Auburn Mountainview High School students request permission to travel to Boise, Idaho, Wednesday to Sunday, July 8-12. The purpose of the trip is to attend the Boise State Volleyball Camp. Lodging will be at the Oxford Suites, meals will be at local restaurants and travel will be by private vehicles. All expenses will be paid by ASB funds. Telia Peterson, Auburn Mountainview High School coach, requests permission to accompany the students. A substitute will not be needed.

- f. Twenty-seven Auburn Riverside High School students request permission to travel to Poulsbo, Friday to Monday, July 10-13. The purpose of the trip is to attend the Cheer Sideline Team Camp. Lodging and meals will be at Island Lake Camp and travel will be by school bus. All expenses will be paid by ASB funds. Crystal Curley and Emily Shearer, Auburn Riverside High School coaches, request permission to accompany the students. Substitutes will not be needed.
- g. Twelve Auburn Riverside High School students request permission to travel to Bellingham, Sunday to Wednesday, July 19-22. The purpose of the trip is to attend Volleyball Camp. Lodging and meals will be at Western Washington University and travel will be by private vehicles. All expenses will be paid by ASB funds. Chris Leverenz, Auburn Riverside High School coach, requests permission to accompany the students. A substitute will not be needed.
- h. Thirty-three Auburn Mountainview High School students request permission to travel to Tacoma, Wednesday to Saturday, July 22-25. The purpose of the trip is to attend Cheer Camp. Lodging and meals will be at the University of Puget Sound and travel will be by personal cars. All expenses will be paid by ASB funds. Shana Biggs, Terrilynn Pritchard, and Crystal Chindavongsa, Auburn Mountainview High School coaches, request permission to accompany the students. Substitutes will not be needed.
- i. Thirty-five Auburn Mountainview High School students request permission to travel to Randall, Monday to Thursday, August 17-20. The purpose of the trip is to attend Marching Band Camp. Lodging and meals will be at the Cispus Learning Center and travel will be by school bus. All expenses will be paid by ASB funds. Derek Pyle, Auburn Mountainview High School teacher, requests permission to accompany the students. A substitute will not be needed.

Recommendation: That the above trips be approved as requested.

SCHOOL PROGRAMS AND STUDENT ACHIEVEMENT

1. Advanced Placement Government and Politics Comparative Curriculum—Second Reading

Heidi Harris, assistant superintendent of student learning, will introduce Cynthia Blansfield, executive director of high school and post-secondary programs, who will present the advanced placement government and politics comparative curriculum for second reading and adoption and answer questions from the board. Goal 1 Student Achievement, Objective 5 High School Graduation, "Auburn School District and schools increase accelerated program offerings K-12 such as enrichment, advanced placement (AP), career and technical education (CTE), science, technology, engineering, math and fine arts."

Recommendation: That the proposed advanced placement government and politics comparative curriculum be approved for second reading and adoption.

2. 2014-15 Career and Technical Education Curriculum Review for Agriculture, Jewelry, Visual Communication, and Video Gaming and Interactive Media—Second Reading

Cynthia Blansfield will present the Career and Technical Education Curriculum Review for Agriculture, Jewelry, Visual Communications and Video Gaming and Interactive Media curriculum for second reading and adoption and answer questions from the board. Goal 1 Student Achievement, Objective 1 Professional Communities, "Instruction is aligned to state, national common core and industry standards."

Recommendation: That the proposed Career and Technical Education Curriculum Review for Agriculture, Jewelry, Visual Communications and Video Gaming and Interactive Media curriculum be approved for second reading and adoption.

3. 2015-16 Washington Interscholastic Activities Association (WIAA) Resolution

Timothy Cummings, associate superintendent of Human Resources, will introduce Robert Swaim, director of athletics and activities, who will present the 2015-16 WIAA Resolution. Annually, the board is asked to delegate to the Washington Interscholastic Activities Association (WIAA) the authority to control, supervise, and regulate interscholastic activities as included within the district instructional program. Such delegation of powers is to the extent authorized by statute and is in a manner consistent with WIAA rules and regulations. Mr. Swaim will answer any questions from the board.

Recommendation: That the school board president and secretary be authorized to sign the WIAA School Board Resolution Delegating

Authority to WIAA and District Membership Form for Middle Level & High Schools for 2015-16 and name a board member as a school contact person.

4. Summer 2015 Athletic Program

Robert Swaim will present the summer athletic program for 2015 and answer any questions the board might have.

Recommendation: That the summer athletic programs be approved as presented.

5. 2015-16 Federal and State Grant Allocation

Heidi Harris will introduce Julie DeBolt, director of assessment and NCLB, who will share with the board the 2015-16 state and federal grants program plans. Specific grant-funded program plans must be approved annually by the school board. Mrs. Harris and Mrs. DeBolt will answer questions from the board.

Recommendation: That the board of directors approves the 2015-16 school year state and federal grants program plans.

6. 2015-16 Highly Capable and State Transitional Bilingual Plan

Heidi Harris and Julie DeBolt will share the 2015-16 highly capable program plan and state transitional bilingual program plan for the Auburn School District. The highly capable and state transitional bilingual program plan must be approved annually by the school board. Mrs. Harris and Mrs. DeBolt will answer questions from the board.

Recommendation: That the board of directors approves the 2015-2016 school year highly capable and state transitional bilingual program plan.



Advanced Placement Government and Politics: Comparative



INTRODUCTION

Course Name	Advanced Placement Government and Politics: Comparative	Grade Level(s)	12
Course Length	1 year	Course Code (s)	SOC 410, 411

Course Description:	AP Comparative Government and Politics introduces students to the rich diversity of political life outside the United States. The course uses a comparative approach to examine the political structures; policies; and the political, economic, and social challenges among six selected countries: Great Britain, Mexico, Russia, Iran, China, and Nigeria. Additionally, students examine how different governments solve similar problems by comparing the effectiveness of approaches to many global issues.
Pathway Connections	This course is beneficial for all college bound students.
Sample Sequence of Courses	World Studies US History Civics or AP Government and Politics: United States AP Comparative
Cross Credit and/or College Credit	AP Comparative Government and Politics meets requirements for Global Issues credit for Seniors. College credit can be earned by passing the AP exam.
Basic Textbook	Comparative Politics: Domestic Responses to Global Challenges
Equipment	None
Software	None
Supplemental Materials	YouTube videos, The Economist, Washington Post, etc.



POWER STANDARDS

Course Name	Advanced Placement Government and Politics: Comparative	Grade Level(s)	12
--------------------	--	-----------------------	----

Students successfully completing this course will:

- Compare and contrast political concepts, themes, and generalizations;
- Describe and explain typical patterns of political processes and behaviors and their consequences;
- Compare and contrast political institutions and processes across countries and to derive generalizations; and
- Analyze and interpret basic data relevant to comparative government and politics.

Overview

This course is designed to provide students with the conceptual tools necessary to develop an understanding of some of the world's diverse political structures and practices. We will examine six countries in detail: China, Great Britain, Russia, Mexico, Nigeria, and Iran. These countries are taught because they are excellent examples of the six core topics of a comparative course. These topics include methodology, power, institutional structure, civil society, political/economic change and public policy. [SC8]

SC 8 The course uses concrete examples from China, Great Britain, Iran, Mexico, Nigeria, and Russia including contemporary political changes, to illustrate the six major content areas of the course.

Course Materials

Assigned Textbook: Hauss, Charles. *Comparative Politics: Domestic Responses to Global Challenges AP Edition, 9th ed.* Belmont, CA: Wadsworth/Thompson Learning, 2015.

Instructor assigned articles from: the BBC, the *Economist*, the *New York Times*, the *Washington Post*, *The Atlantic*, *Journal of Democracy*, *Foreign Policy*, *Foreign Affairs*, and others as appropriate. [SC12]

SC 12 The course includes supplemental readings that contain contemporary news analyses, thereby strengthening the students' understanding of the curriculum.

Course Outline

The following is a listing of topics/sample readings. Please consult your assignment calendar for specific due dates of actual assignments.

I. Introduction to Comparative Politics (Weeks 1–4) [SC1]

A. Reasons for Comparison

B. Methods of Comparison

- 1.) Normative/empirical, direct/inverse relationships, correlation/causation
- 2.) Issues to Compare
- 3.) Democracy/authoritarian, unitary/federal, presidential/parliamentary
- 4.) SMD/proportional, pluralism/corporatism, merit/patronage, OECD/LDC, modernization/globalization/fragmentation, judicial autonomy
- 5.) Sources of Sovereignty, Authority and Power [SC2]

SC 1 The course provides instruction on an introduction to Comparative Politics.

Readings

- Hauss: Chapter 1: Seeing with New Eyes (voc) Chapter 2: Industrialized Democracies (voc)
- Democratization Briefing Paper with questions
Comparison/Democracy Reading Packet with questions

SC 2 The course provides instruction in Sovereignty, Authority, and Power.

- “The Mountain Man and the Surgeon”, *Economist* 12/20/05
- “Democracy as a Universal Value”, *Journal of Democracy*, 7/99

Activities

1. Using CIA World Factbook, Freedom House website, the *Economist* website, construct comparison chart featuring population, territory, HDI, GDP, PPP, Economic, Political/ Civil Liberty Freedom figures. Analyze relationships using methods.
2. Using textbook, complete chart comparing six countries and United States on issues. [SC10]

SC 10 The course introduces students to the interpretation and analysis of data relevant to comparative government and politics.

Assessment

Test: 50 multiple-choice questions, short answers, and interpretive essay [SC11]

SC 11 The course requires students to write analytical and interpretive essays.

II. Democratic v. Authoritarian Regimes (Weeks 5-12)

A. Great Britain

1. Historical Foundations: constitutionalism, Legitimacy, Nation/State, Liberal Democracy [SC3]
2. British citizens, Society, and the state: Demographics, Cleavages, Civil Society [SC4]
3. Political Institutions: Political Parties/Elections, Westminster Model [SC5]
4. Role of E.U.: Sovereignty
5. Public Policy: Thatcherism, N. Ireland, Role of NHS, Immigration, Terrorism

SC 3 The course provides instruction in State and Nation.

SC 4 The course provides instruction in Citizens and Society and the State.

SC 5 The course provides instruction in Political Institutions.

Readings

- Hauss: Chapter 4: Great Britain (voc)
- British Election of 2005 briefing paper with questions
- Great Britain reading packet with questions
- “Brown Speech Promotes Britishness,” BBC 1/19/06
- “Blair to Push Ahead With Reforms,” BBC 2/1/06

Activities

1. Watch current Prime Minister’s Question Hour (C-SPAN)
2. PM *Question Time* Simulation: Party and Topic to be

assigned.

3. Analyze recent election returns for trends.

Assessment

Test: 50 multiple-choice questions and short-answer (ID and interpretive essay)

B. Iran

1. Historical Foundations: Revolution (Political Change)
2. Iranian Citizens, Society, and the State: Globalization/Fragmentation
3. Political Institutions: Role of Islam, Theocracy [SC5]
4. Policy: Petropolitics, Nuclear Weapons, Iraq

SC 5 The course provides instruction in Political Institutions.

Readings

- Hauss: Chapter 13: Iran (voc)
- Iran briefing paper with questions
- Globalization briefing paper with questions
- Iran reading packet with questions
- “Victory for a Religious Hardliner in Iran,” *Economist* 6/27/05
- “As Iran Presses Its Ambitions, Its Young See Theirs Denied,” *Washington Post* 4/24/06

Activities

1. Watch movie on Iranian Revolution (PBS)
2. Complete comparison chart for Great Britain and Iran.
3. Class Debate: “Should Iran develop nuclear weapons?”
4. Analyze recent election returns for trends.
5. Evaluate economic indicators.

Assessment

Test: 60 multiple-choice questions and short answer (ID and essay) [SC11]

SC 11 The course requires students to write analytical and interpretive essays.

III. The Crisis of Communism (Week 13–20)

A. Russia

1. Historical Foundations: Soviet Union/Russia, glasnost, post-Cold War
2. Russian Citizens, Society, and the State
3. Political Institutions: President/PM, Illiberal Democracy [SC9]
4. Policy: G8, Chechnya

SC 9 The course teaches students to compare and contrast political institutions and processes across countries to derive generalizations.

Readings

- Hauss: Chapter 8: Current and Former Communist Regimes (voc) Chapter 9: Russia (voc)
- Russia's Elections Briefing Paper with questions
- Illiberal Democracy and Russia Briefing paper with questions
- Russia Reading Packet with questions
- "Still Calling for Help (Chechnya)", *Economist* 1/13/05
- "The Shock of the Old", *Economist* 1/20/05
- "The Kremlin's Control Freak", *Economist* 9/16/04
- "Vladimir Who?", *Economist* 2/9/06

Activities

1. Watch movie on Russian Revolution (People's Century).
2. Watch movie on Gorbachev coup attempt (ABC special).
3. Complete comparison chart of institutions/policies between USSR/Russia.
4. Complete comparison chart of Russia/Iran/Great Britain.
5. Class Debate: "Should Russia be in the G8?"
6. Analyze recent election results for trends.
7. Evaluate economic indicators.

Assessment

Test: 60 multiple-choice questions and short-answer questions (ID and interpretive essay) [SC11]

SC 11 The course requires students to write analytical and interpretive essays.

B. China

1. Historical Foundations: Revolution, Cultural Revolution, Economic Modernization [SC6]
2. Chinese Society: Rich/Poor Cleavages
3. Political Institutions: Guanxi, Corruption, Mass Line, Democratic Centralism
4. Policy: Privatization, Google, Falun Gong, Taiwan and Tibet [SC7]

SC 6 The course provides instruction in Political and Economic Change.

SC 7 The course provides instruction in Public Policy.

Readings

- Hauss: Chapter 10: China (voc)
- “Great Leap Forward,” *Economist* 9/30/04
- Briefing Paper on China with questions
- China Reading Packet with questions
- “Country Profile: China.” BBC
- “China’s Intolerance of Dissent,” BBC 3/8/05
- “Worried in Beijing,” *Economist* 8/5/99

Activities

1. Watch movie on Chinese Revolution (People’s Century)
2. Watch movie on Tiananmen Square (ABC special)
3. Watch movie on China’s economy (Wall Street Journal)
4. Create comparison chart for China/Russia/Iran/GB
5. Class Simulation: CCP leading small group economic proposals
6. Analyze and evaluate economic indicator data

Assessment

Test: 60 multiple-choice and short-answer questions (ID and essay)

IV. Emerging Economies (Weeks 21-28)

A. Mexico

1. Historical Foundations
2. Mexican Citizens, Society, and the State
3. Political Institutions: Camarilla, Corporatism, Legitimate Elections
4. Public Policy: NAFTA, Chiapas, Immigration, Structural Adjustment

Readings

- Hauss: Chapter 11: The Third World (voc) Chapter 16: Mexico (voc)
- Briefing paper on Mexico with questions
- Mexico reading Packet with questions
- “Redrawing the Federal Map”, *Economist* 3/27/03
- “Putting The Brakes on Change”, *Economist* 7/10/03
- “At Least I’m No Dictator, says Mr. Fox”, *Economist* 9/8/05
- “The Sinking of a Flagship”, *Economist* 2/23/06
- “The War on the Border Streets,” *Economist* 6/30/05
- “A Few Shots at Power”, *Economist* 9/18/03

Activities

- Watch movie on Mexican economy (*Wall Street Journal*).
- Create comparison chart for Mexico/China/Russia/Iran/Great Britain.
- Simulation: Brown Choices Exercise: Mexico at the Crossroads.
- Analyze recent political election data for trends.
- Evaluate economic indicator data.

Assessment

Test: 60 multiple-choice with short answers (ID and essay)

B. Nigeria

1. Historical Foundations: Colonialism, Military Coups, Authority
2. Nigerian Citizens, Society, and the State
3. Political Institutions
4. Public Policy: Corruption, Terrorism, Poverty, Oil

Readings

- Hauss: Chapter 15: Nigeria (voc)
- “Guns, Boats, and Oil”, *Economist* 5/12/05
- “A Spectre of Turmoil and Conflict”, *Economist* 2/23/06
- Briefing Paper on Nigeria with questions
- Nigeria Reading Packet with questions
- “Nigeria’s Country Controversy,” BBC 4/5/06
- “The Bumpy Road to Democracy,” *Economist* 4/23/03
- “Reforming the Nearly Unreformable,” *Economist* 8/5/04
- “When the Cops are Robbers,” *Economist* 8/18/05
- “The Fat of the Land,” *Economist* 8/27/05

Activities

1. Create comparison chart with Mexico/China/Russia/Iran/Great Britain.
2. Class Debate: “Future of Nigeria.”
3. Analyze recent political election data.
4. Evaluate economic indicator trends.

Assessment

Test: 60 multiple-choice questions and short answers
(ID and essay) [SC11]

SC 11 The course requires students to write analytical and interpretive essays.

V. Final Comparisons (Weeks 29–32)

- A. Compare six comparative government countries and United States to review for AP Exam

Activities

1. Country Group presentations/discussion
2. Complete final comparison charts

Assessment

Final Exam: To be taken before the national AP Comparative Government and Politics Exam.

Basic Instructional Materials Request

Page 1 of 3

SCHOOL DEPARTMENT OR COMMITTEE SUBMITTING REQUEST:

Auburn Riverside High School Social Studies

List names of persons who evaluated this material:

NAME	POSITION	SCHOOL
<u>Patrick McKeehan</u>	<u>Teacher</u>	<u>Auburn Riverside</u>
<u></u>	<u></u>	<u></u>
<u></u>	<u></u>	<u></u>
<u></u>	<u></u>	<u></u>
<u></u>	<u></u>	<u></u>
<u></u>	<u></u>	<u></u>
<u></u>	<u></u>	<u></u>

This request for basic instructional materials must be accompanied with a curriculum framework outlining, at a minimum, units of instruction, Essential Academic Learning Requirements and/or Grade Level Expectations, assessments, and thinking skills. A curriculum framework document is included in the Curriculum Framework section of this handbook.

1. REQUESTED MATERIAL

Type of material being requested: ☒ Book ☐ Software ☐ CD/DVD ☐ Online/Web Resources ☐ Other

Title Comparative Politics: Domestic Responses to Global Challenges Copyright 2015

Author Charlie Hauss Publisher Cengage Learning ISBN 978-1-285-74142-0

Range of readability levels _____ Average readability level _____

2. COURSE INFORMATION

Subject in which requested material will be used:

AP Comparative Government and Politics

Grade level(s) for which this material is being requested:

12

3. COST ANALYSIS

First year cost per student \$86 Number of students to use material 35

Cost per student to maintain on yearly basis 0

Other costs (specify) _____

Total cost of adoption for: **Building** 0 **District** \$3,625.55

Basic Instructional Materials Request

Page 2 of 3

PROGRAM GOALS. The requested basic instructional materials are consistent with district, building, department, and/or course goals including:

Criteria	Yes	No	N/A
1. Consistency with district and program mission, vision, goals and objectives	<input checked="" type="checkbox"/>	<input type="checkbox"/>	<input type="checkbox"/>
2. Align with state- and district-defined Essential Academic Learning Requirements and/or Grade Level Expectations	<input checked="" type="checkbox"/>	<input type="checkbox"/>	<input type="checkbox"/>
3. Further the systematic and sequence of the program across K-12	<input checked="" type="checkbox"/>	<input type="checkbox"/>	<input type="checkbox"/>

DISTRICT AND COMMUNITY STANDARDS. The requested basic instructional materials are consistent with district and community standards including:

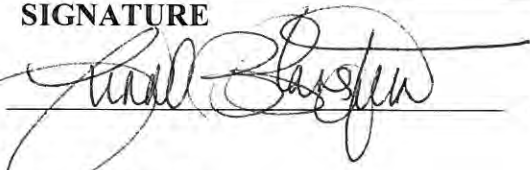

Criteria	Yes	No	N/A
Provides teachers guidelines to:			
1. Present differing viewpoints of controversial issues in order for students to develop the skills of critical analysis and informed decision making.	<input checked="" type="checkbox"/>	<input type="checkbox"/>	<input type="checkbox"/>
2. Promote the diverse character of our world by:			
a. Presenting cultural and ethnic differences.	<input checked="" type="checkbox"/>	<input type="checkbox"/>	<input type="checkbox"/>
b. Using language and examples which treat all human beings with respect and dignity.	<input checked="" type="checkbox"/>	<input type="checkbox"/>	<input type="checkbox"/>
c. Helping students understand and accept the diversity in the heritage and culture of our nation's people.	<input type="checkbox"/>	<input type="checkbox"/>	<input checked="" type="checkbox"/>
d. Recognizing various types of family structures.	<input type="checkbox"/>	<input type="checkbox"/>	<input checked="" type="checkbox"/>
e. Recognizing differing socioeconomic levels.	<input checked="" type="checkbox"/>	<input type="checkbox"/>	<input type="checkbox"/>
d. Recognizing differences in minorities and gender.	<input checked="" type="checkbox"/>	<input type="checkbox"/>	<input type="checkbox"/>
e. Representing occupational diversity of populations.	<input checked="" type="checkbox"/>	<input type="checkbox"/>	<input type="checkbox"/>
3. Materials are appropriate for the age, experience, and maturity level of the student for whom it is intended.	<input checked="" type="checkbox"/>	<input type="checkbox"/>	<input type="checkbox"/>
a. Materials are free from inappropriate use of profane, obscene, or derogatory language.	<input checked="" type="checkbox"/>	<input type="checkbox"/>	<input type="checkbox"/>
b. Materials are free from inappropriate written or visual graphic sexual incidents.	<input checked="" type="checkbox"/>	<input type="checkbox"/>	<input type="checkbox"/>
6. Materials stimulate student growth in conceptual thinking, factual knowledge, physical fitness, literary appreciations, aesthetic values, and the development of ethical and moral standards.	<input checked="" type="checkbox"/>	<input type="checkbox"/>	<input type="checkbox"/>
7. Materials enrich and support the curriculum, taking into consideration the varied instructional needs, abilities, interests, and maturity levels of the students served.	<input checked="" type="checkbox"/>	<input type="checkbox"/>	<input type="checkbox"/>

Materials adopted in the Auburn School District are appropriate for the age, experience, and maturity level of the student for whom they are intended. Teaching and learning materials should not include obscene language or graphic sexual incidents. Rationale must be presented and appropriate instructional goals included where potentially explicit topics or visual aids are used. Alternate learning opportunities will be provided upon request in the case that an objection is made to the approved instructional material.

Selection of Basic Instructional Materials

Page 3 of 3

**REQUIRED SIGNATURES
FOR APPROVAL of BASIC INSTRUCTIONAL MATERIALS**

APPROVED BY	SIGNATURE	DATE
1. Director of Student Learning (elementary or secondary)		5-19-15
2. Assistant Superintendent of K-12 Student Learning		5/19/15
3. Board of Directors		



WASHINGTON INTERSCHOLASTIC
ACTIVITIES ASSOCIATION

SCHOOL BOARD RESOLUTION

Electronic form available at: wiaa.com/resolution.aspx

Return by the second Friday in June annually.

Public School District: Auburn #408 — OR — Private School(s): Type name here

Resolution # (optional): Type number here Date: 06/22/15

By action of the 1976 Legislature, each School District Board of Directors may delegate control, supervision, and regulation of any extracurricular activity to the WIAA and compensate such entity for services provided.

The local **SCHOOL BOARD PRESIDENT** and **SUPERINTENDENT** must sign this resolution form to indicate that the School Board has approved the Public School District's or Private School's membership with the Washington Interscholastic Activities Association (WIAA) and as members, these schools will follow the WIAA Rules and Regulations.

DELEGATING AUTHORITY TO WIAA

WHEREAS Chapter 32, Laws of 1975-76, 2nd Ex. Sess. grants authority to each school district board of directors to control, supervise and regulate the conduct of interschool athletic activities and other interschool extracurricular activities of an athletic, cultural, social, or recreational nature for students in the district.

WHEREAS Chapter 32, Laws of 1975-76, 2nd Ex. Sess. authorizes school district boards of directors to delegate control, supervision and regulation of any of the aforesaid activities to any voluntary, nonprofit entity and to compensate any such entity for services provided subject to the satisfaction of certain conditions and approval by the State Board Of Education.

WHEREAS the Washington Interscholastic Activities Association is a voluntary, nonprofit entity which has satisfied the conditions, expressly set forth in Chapter 32, Laws of 1975-76, 2nd Ex. Sess. and has further been approved by the State Board of Education in action taken on August 17, 1977.

WHEREAS the board of directors of directors of the following School District or School being otherwise fully informed of the rules and regulations of the Washington Interscholastic Activities Association as approved by the State Board of Education and recognizing that said rules and regulations provide for private sponsorship of post-season tournaments for extracurricular activities by WIAA, consent to abide by such rules and regulations.

NOW THEREFORE, the board of directors of the following School District or School hereby delegates to the Washington Interscholastic Activities Association the authority to control, supervise and regulate interschool activities consistent with the rules and regulations of WIAA. The Board of Directors retains the right to establish eligibility standards that meet or exceed the rules and regulations of WIAA.

INTERSCHOLASTIC OFFICIALS L&I COVERAGE STATEWIDE

Beginning July 1, 1988, interscholastic sports officials were covered by Washington State Labor and Industries via a common rate and payment system that eliminated game-by-game calculations and record keeping by school and/or district business offices. WIAA will guarantee payment of L&I premiums for WOA registered officials for all interscholastic activities under WIAA's jurisdiction and will assess WIAA member schools via classification rates at the same time service fees are billed. Officials L&I coverage is only in effect for activities authorized and offered by School Board approval and listed on the school's WIAA membership form.

By signing below the School District Superintendent/Head of School, School Board President (for Public School Districts), and school board members agree to the information above for the public school district or private school listed above, on or before the date listed above.

Superintendent/Head of School: Dr. Kip Herren

Signature: _____

School Board President (if applicable): Carol Seng

Signature: _____

School Board Members (list WIAA Contact as first school board member):

1. Laurie Bishop Signature: _____

2. Ray Vefik Signature: _____

3. Anne Baunach Signature: _____

4. Ryan Van Quill Signature: _____

5. Type name here Signature: _____

435 Main Ave. S. | Renton, WA 98057 | (425) 687-8585 phone | (425) 687-9476 fax | www.wiaa.com | facebook.com/wiaawa | twitter.com/wiaawa



PREPARING YOUTH FOR LIFE, FROM ONE GENERATION TO THE NEXT.



WIAA MEMBERSHIP RENEWAL FORM

Electronic form available at: wiaa.com/membership.aspx
Return by the second Friday in June annually.

WASHINGTON INTERSCHOLASTIC
ACTIVITIES ASSOCIATION

School District/Private School Information

Name of Public School District or Private School		Auburn School District			
Address	915 4 th ST NE	City	Auburn	Zip	WA
Phone	253-931-4999	Fax	253-931-4994	WIAA District (1-9)	3

District Superintendent/Head of School Information

Name	Dr. Kip Herren	Phone	253-931-4914	E-mail	kherren@auburn.wednet.edu
------	----------------	-------	--------------	--------	---------------------------

School Board Contact Information (School Board Members Only)

To improve the flow of information each School Board may select a **SCHOOL DIRECTOR** to be the WIAA School Board Contact. The WIAA School Board Contact receives the following WIAA mailings: Newsletters, Executive Board Summary of Action, Amendments, and the Annual Report. The WIAA School Board contact is expected to serve as the liaison between the member school's activities programs and the other school Board Members.

Name	Laurie Bishop	Phone	253-931-4914	E-mail	lbishop@auburn.wednet.edu
------	---------------	-------	--------------	--------	---------------------------

By action of the 1976 Legislature, each School District Board of Directors may delegate control, supervision, and regulation of any extracurricular activity to the WIAA and compensate such entity for services provided.

Please list each school below renewing WIAA Membership for the upcoming school year from the school district/private school(s).

Member high schools and middle level schools will be billed in September according to total student enrollment in the school and the number of sports/activities as indicated on the spring Participation Survey. A Labor and Industries (L&I) fee will also be sent to each member school at that time.

Schools Renewing WIAA Membership	MS/JH/HS	Schools Renewing WIAA Membership	MS/JH/HS
Auburn Senior High	HS	Olympic	MS
Auburn Mountainview	HS	Rainier	MS
Auburn Riverside	HS	Type school name here	Type level here
Cascade	MS	Type school name here	Type level here
Mt. Baker	MS	Type school name here	Type level here



AUBURN HIGH SCHOOL Summer 2015

PROGRAM DESCRIPTION	TYPE OF PROGRAM	INSURANCE
Football Weight Training & Conditioning TEAM CAMP @ AHS 6/19-6/21	ASB	ASB doesn't need insurance.
Volleyball - practice	ASB	ASB doesn't need insurance.
Soccer – Girls' Practice @ AHS	ASB	ASB doesn't need insurance.
Tennis – Boys' Private Camp @ AMHS 7/7 – 7/28 Tues.-Thurs.	Private	Yes
Basketball – Boys' Practice @ AHS thru 6/27 and Olympic for summer	ASB/Summer League Private/Camp	ASB doesn't need insurance.
Basketball – Girls' Practice @ AHS thru 6/27 and Olympic for summer	ASB	ASB doesn't need insurance.
Wrestling Practice @ AHS thru 6/27 Camp @ Oregon State 6/28-7/2	ASB	ASB doesn't need insurance. Insurance covered by camp
Cheer Camp @ Great Wolf 7/6-7/9	ASB	Insurance covered by camp.
Water Polo	NA	Ran as part of the swim pool program.

AUBURN MOUNTAINVIEW HIGH SCHOOL Summer 2015

PROGRAM DESCRIPTION	TYPE OF PROGRAM	INSURANCE
Football /Camp @ Evergreen State 6/26-29, passing league @ Auburn/Practice	ASB Fball Camp - Booster	ASB doesn't need insurance. Insurance through Camp
Football/Boys Basketball - Weight Training & Conditioning	ASB	ASB doesn't need insurance.
Basketball – Boys & Girls – Youth Camp and practice (Boys Bball camp at WSU 6/29-7/2)	ASB Bball Camp - Parents Paying camp directly	ASB doesn't need insurance. Insurance through Camp reg.
Track – Practice 2x per week	ASB	ASB doesn't need insurance.
Volleyball practice and Camp @ Boise State 7/8-7/12	ASB	ASB doesn't need insurance.
Tennis Boys- Summer practice	ASB	ASB doesn't need insurance.
Soccer – Practice/Conditioning	ASB	ASB doesn't need insurance
Cheer/Camp @ UPS / Practice	ASB	ASB doesn't need insurance
Water Polo	NA	Ran as part of the swim pool program.

AUBURN RIVERSIDE HIGH SCHOOL Summer 2015

PROGRAM DESCRIPTION	TYPE OF PROGRAM	INSURANCE
Basketball - Girls' <ul style="list-style-type: none"> • Practice • Summer tourneys (3) • Kids camp 	ASB	ASB doesn't need insurance.
Tennis/Summer camp @ ARHS	ASB	ASB doesn't need insurance
Volleyball <ul style="list-style-type: none"> • Practice • Camp @ Western June 19-22 • Summer league @ Lake Tapps VB facility in Puyallup 	ASB	ASB doesn't need insurance.
Basketball - Boys' Practice Summer League	ASB	ASB doesn't need insurance.
Football <ul style="list-style-type: none"> • Practice June & July • Camp-Fife HS 6/22-24/2015 	ASB	ASB doesn't need insurance.
Soccer - Girls'/ Practice @ GFP	ASB	ASB doesn't need insurance.
Cross Country Conditioning	ASB	ASB doesn't need insurance.
Cheer / Practice / Camp	ASB	ASB doesn't need insurance.
Girls Swimming/Practice	ASB	ASB doesn't need insurance.
Water Polo	NA	Ran as part of the swim pool program.
Fastpitch Practice @ Sunset Park Games at AMHS	ASB	ASB doesn't need insurance.
Lacrosse 3 camps @ Aub Parks and ASD Fields	ASB	ASB doesn't need insurance.
Wrestling Practice @ ARHS thru 6/29 Camp @ Oregon State 6/28-7/2	ASB	ASB doesn't need insurance. Insurance covered by camp

Name	Program Area	Funding Type	Eligible Schools	Plan/Purpose	Board Approval Needed
Highly Capable (STATE)	Learning and Teaching	Apportionment 2012-2013 (\$126,691) 2013-2014 (\$126,691) 2014-2015 (145,228) 2015-2016 (\$140,353)	Terminal Park STEP All Elementary Schools All Middle Schools All High Schools	These funds support school districts development of identification procedures, educational programs, and services to highly capable students. At the elementary level the district has a accelerated programs for qualified highly capable students at all schools and has a self-contained program (STEP) located at Terminal Park for grades 4 and 5. The middle schools offer Program for Acceleration and Clustered Education (PACE) opportunities to identified students in the areas of language arts and social studies. The high schools offer PACE opportunities in a model through honors and advanced placement classes to students who qualify. Teachers are provided training on advanced placement classes.	YES
State Bilingual (STATE)	Learning and Teaching	Apportionment 2012-2013 (\$1,591,769) 2013-2014 (\$1,591,769) 2014-2015 (2,221,004) 2015-2016 (\$2,734,404)	All Schools	These funds support school districts for the implementation of transitional bilingual education programs and supplemental assistance to schools. Funds are used for instructional staff. For 2015-2016 school year the district anticipates TBIP to support portions of 26.7 certificated teachers and 161 para educator hours. ASD elementary program will consist of Content Based Instruction (Science for K and 1), push in and pull out programs. ASD middle school programs will consist of Content Based Instruction (ELA) and push in /pull out instruction as needed. ASD High School Program will consist of Sheltered Language Instruction, Content Based Instruction (Social Studies and ELA), pull out/push in as needed.	YES
TITLE I Part A Improving Basic Programs and ARRA Stimulus (FEDERAL)	Learning and Teaching	Entitlement 2012-2013 (\$2,532,392) 2013-2014 (\$2,506,470) 2014-2015 (\$3,400,618) 2015-2016 (\$4,054,868)	All Elementary Schools G5 All Middle Schools All High Schools PRIVATE (Grades 5-12) Holy Family Rainier Christian Kent View Elementary	Supplementary funds assist districts and schools based upon poverty. Schools design programs to help students at greatest risk of not meeting standards; particularly in reading and math. One percent of the funding must be allocated for parent involvement. Districts and Schools in "AYP steps of improvement" have additional set asides for Public School Choice (10%) and Supplemental Education Services (10%). Each school has a written compensatory plan that describes services to students, staff development and parent involvement. Private schools identify poverty students for funding. Students identified being not able to meet standard are served.	NO
TITLE II Teacher and Principal Quality and Class Size Reduction (FEDERAL)	Learning and Teaching	Entitlement 2012-2013 (\$474,990) 2013-2014 (\$474,990) 2014-2015 (\$384,958) 2015-2016 (\$450,070)	All Schools Staff development for teachers and principals. Principal and Teacher Development through Training PRIVATE Holy Family Rainier Christian Kent View	District surveys staff in the areas of knowledge and teaching needs. Proposed use for Title II (A) is for school improvement work, staff development on Thinking Maps (Elementary and Middle School), staff development on the best practices in reading and mathematics. Reduce class size in primary grades; especially grade two. The focus is on reading improvement and target students below reading standard, but not receiving Title I. Professional staff development.	NO

TITLE III Language Instruction to Limited English Proficient Students (FEDERAL)	Learning and Teaching	Entitlement 2012-2013 (\$333,970) 2013-2014 (\$333,970) 2014-2015 (338,655) 2015-2016 (\$392,339)	Elementary All Schools	To ensure that limited English speaking students develop English proficiency and meet the same academic content and achievement standards that other students are expected to meet. Funds are to be used to increase language instruction programs. These funds cannot be used to hire instructional staff and are used for the purchase of instructional material and professional development.	NO
Title VII Indian Education	Learning and Teaching	Entitlement 2012-2013 (\$82,264) 2013-2014 (\$82,365) 2014-2015 (82,365) 2015-2016 (\$82,365)	Virginia Cross Native Education Center	Funds are used to employ instructional staff to provide direct supportive educational services to Native American students.	NO
Individuals with Disabilities Education Act (IDEA) (FEDERAL)	Special Education	Entitlement 2012-2013 (\$2,602,139) 2013-2014 (\$2,602,139) 2014-2015 (2,521,301) 2015-2016 (\$2,947,035)	All Schools	Financial assistance to school districts for the provision of special education services and supports for students with disabilities. The funds may be used for direct instruction, related services, supplementary aids and services, accommodations, educational material, professional development, transition services, technology, assistive technology, and transportation.	NO
State Special Education	Special Education	2014-2015 (9,252,159) 2015-2016 (\$12,809,965)	All Schools	Designed for school districts for the provision of special education services and supports for students with disabilities.	NO
Learning Assistance and Program (LAP) (STATE)	Learning and Teaching	Apportionment 2012-2013 (\$2,012,933) 2013-2014 (\$2,012,933) 2014-2015 (3,758,949) 2015-2016 (\$3,955,544)	All Schools are Eligible Current Schools: All Elementary Schools K-4	Designed for remedial services to low-performing students in grades K-12, LAP is a companion program to the federal Title I. LAP is designed to work with students who are at the greatest risk of not meeting standard; particularly in reading and math. Each school has a written compensatory plan that describes services to students, staff development and parent involvement.	NO

1. Certificated and Classified Personnel Report

Recommendation: That the board approve the attached report.

a. Eric Daniel, Arthur Jacobsen Elementary School principal, requests permission to travel to Chicago, Illinois, Sunday to Wednesday, June 21-24. The purpose of the trip would be to attend the 2015 National Family & Community Engagement Conference. Lodging will be at The Palmer House, meals will be at local restaurants, and travel will be by airplane. All expenses will be paid by district funds. No substitute will be needed. *By prior administrative approval.*

b. Naomi Elliott, Arthur Jacobsen Elementary School teacher; Vallery McCann, Mt. Baker Middle School teacher; Laurie Bulson, Terminal Park Elementary School teacher; Harriet Dalos, Rainier Middle School teacher; Kyle Rees and Sarah Botkin, Auburn Riverside High School teachers; Patrick and Janalyn McKeegan, Auburn Riverside High School teachers; and Jackie DeHaven, Auburn School District consultant, request permission to travel to Chicago, Illinois, Tuesday to Friday, July 7-10. The purpose of the trip would be to attend the 2015 SIOP (Society for Industrial and Organizational Psychology) National Conference. Lodging will be at the Hyatt Regency O'Hare hotel, meals will be at local restaurants, and travel will be by airplane. All expenses will be paid by district funds. No substitutes will be needed.

Recommendation: That the above trips be approved as requested.

PERSONNEL REPORT - CERTIFICATED

Classification	Job Type	Building	Name	Start Date	Hours	Rate of Pay	Comment
Curriculum-Noncurriculum							
CERTIFICATED	ANTI-BULLYING WORKSHOP	ANNEX	GALLAGHER, LINDSEY	6/9/2015	7	\$45.17	
CERTIFICATED	ANTI-BULLYING WORKSHOP	ANNEX	LOCKE, SARA	6/9/2015	7	\$45.17	
CERTIFICATED	BEHAVIOR LEADERSHIP TEAM	AUBURN HIGH	ERDMANN, HEIDI	5/1/2015	2	\$50.93	
CERTIFICATED	BEHAVIOR LEADERSHIP TEAM	TERMINAL PARK	MARTIN, MICHAEL	5/1/2015	2	\$40.06	
CERTIFICATED	CAMP AUBURN	DICK SCOBEE	BAEHR, AMANDA	6/2/2015		STIPEND \$409	
CERTIFICATED	CAMP AUBURN	DICK SCOBEE	RINGLER, LEANN	6/2/2015		STIPEND \$409	
CERTIFICATED	CCSS ELA TRANS COMM	DICK SCOBEE	LAVINE, ANGELA	4/27/2015	15	\$47.22	
CERTIFICATED	CELSD TRAINING	HAZELWOOD	ANDERSON, MARY	6/8/2015	1	\$48.77	
CERTIFICATED	CELSD TRAINING	ILALCO	BOZLEE, BREANN	6/8/2015	1	\$27.73	
CERTIFICATED	CELSD TRAINING	ILALCO	CALLERO, NIKKI	6/8/2015	1	\$33.82	
CERTIFICATED	CELSD TRAINING	HAZELWOOD	CELVER, CHRISTINA	6/8/2015	1	\$33.46	
CERTIFICATED	CELSD TRAINING	ALPAC	HEIER, ADRIENNE	6/8/2015	1	\$37.30	
CERTIFICATED	CELSD TRAINING	DICK SCOBEE	JENKINS, GLENN	6/8/2015	1	\$29.63	
CERTIFICATED	CELSD TRAINING	DICK SCOBEE	LYSENE, SARAH	6/8/2015	1	\$40.06	
CERTIFICATED	CELSD TRAINING	DICK SCOBEE	ZIEGLER, MARK	6/8/2015	1	\$27.39	
CERTIFICATED	CHILDCARE-ART WORKSHOP	DICK SCOBEE	MAYER, MARGARET	6/3/2015	3	\$50.93	
CERTIFICATED	CLASSROOM SET UP	MT. BAKER	KNIGHTON, DAVID	5/27/2015	2	\$47.22	
CERTIFICATED	CLEAN OUT CLASSROOM	AUBURN HIGH	CUGHAN, RONALD	5/18/2015	14	\$48.04	
CERTIFICATED	CLEAN OUT CLASSROOM	AUBURN HIGH	DONALDSON, FRED	5/18/2015	14	\$45.82	
CERTIFICATED	CLEAN OUT CLASSROOM	AUBURN HIGH	MARTIN, PATRICK	5/18/2015	14	\$48.77	
CERTIFICATED	CLEAN OUT CLASSROOM	AUBURN HIGH	MORRIS, LINDA	5/18/2015	14	\$45.79	
CERTIFICATED	CLEAN OUT CLASSROOM	AUBURN HIGH	SARR, DIANE	5/18/2015	14	\$34.22	
CERTIFICATED	COMMUNITY GYM	AHS	BIRGE, MICAH	6/1/2015	4.5	\$29.63	
CERTIFICATED	COMMUNITY GYM	AHS	CAPPS, JASON	6/1/2015	3	\$50.93	
CERTIFICATED	COMMUNITY GYM	AHS	CUGHAN, RONALD	6/1/2015	4	\$48.04	
CERTIFICATED	COMMUNITY GYM	AHS	KILLIAN, MARCI	6/1/2015	7	\$29.95	
CERTIFICATED	CURR WORK	RAINIER	LUDWIGSON, CHRISTINE	5/1/2015	14	\$48.04	
CERTIFICATED	EARLY ENTRY TESTING	ANNEX	BURCHATZ, KEVIN	6/1/2015	8	\$50.93	
CERTIFICATED	EARLY ENTRY TESTING	ANNEX	GIBSON-MYERS, ELIZABETH	6/1/2015	8	\$45.83	
CERTIFICATED	EARLY ENTRY TESTING	ANNEX	KIM, MIRA	6/1/2015	8	\$37.52	
CERTIFICATED	EARLY ENTRY TESTING	ANNEX	TYSON, BRITTANY	6/1/2015	8	\$36.28	
CERTIFICATED	ENGAGE NY SCOPE/SEQ	LAKELAND HILLS	JEFFREYS, CHRISTA	5/1/2015	15	\$37.74	
CERTIFICATED	ENGAGE NY SCOPE/SEQ	LAKELAND HILLS	MALONEY, KELLY	5/1/2015	10	\$41.27	
CERTIFICATED	FOOD PREP	AUBURN HIGH	KILLIAN, MARCI	6/6/2015	8	\$29.95	
CERTIFICATED	GIFTED STUDENT MEETING	TERMINAL PARK	ANDERSEN, STEPHANIE LYNN	5/28/2015	4	\$50.93	
CERTIFICATED	GIFTED STUDENT MEETING	TERMINAL PARK	MCINTRYE, LEAH	5/28/2015	4	\$50.93	
CERTIFICATED	IEP MTG	ILALCO	PRICE, KATHIE	6/1/2015	1.25	\$50.93	
CERTIFICATED	INTERVIEW TEAM	AUBURN RIVERSIDE	GUISINGER, CHAD	5/21/2015	2	\$41.90	
CERTIFICATED	INTERVIEW TEAM	AUBURN RIVERSIDE	POLLEY, DANIEL	5/21/2015	2	\$50.93	
CERTIFICATED	INTERVIEW TEAM	AUBURN RIVERSIDE	SALOY, DAMIAH	5/21/2015	2	\$34.19	
CERTIFICATED	INVOLUNTARY MOVE	ANNEX	GIBSON-MYERS, ELIZABETH	6/1/2015	14	\$45.83	
CERTIFICATED	KIM SUTTON TRNG	LAKE VIEW	GWIN, BRANDI	3/30/2015	5	\$50.93	
CERTIFICATED	KIM SUTTON TRNG	DICK SCOBEE	JONES, JUDITH	3/30/2015	5	\$50.93	
CERTIFICATED	KINDERGARTEN INSERVICE	TERMINAL PARK	IAMS, MARISSA	4/8/2015	20	\$34.22	
CERTIFICATED	MEC SUMMER TRNG	CASCADE	BROWN, SHAYNA ELIZABETH	7/5/2015	35	\$44.47	
CERTIFICATED	MEC SUMMER TRNG	CASCADE	FONDA, PAULETTE TRACY	8/9/2015	35	\$36.12	
CERTIFICATED	MEC SUMMER TRNG	CASCADE	TAYLOR, QUYNH	8/9/2015	35	\$41.90	
CERTIFICATED	PLC PREP	LEA HILL	JENKINS, SHANNA	6/1/2015	2	\$29.25	
CERTIFICATED	PLC PREP	LEA HILL	PIERCE, FLETCHER	6/1/2015	2	\$27.73	
CERTIFICATED	PLC PREP	LEA HILL	RAY, ELIZABETH	6/1/2015	2	\$31.78	
CERTIFICATED	SIP PREP/PRESENTATION	TERMINAL PARK	BULSON, LAURIE	6/8/2015	3	\$44.80	
CERTIFICATED	SIP PREP/PRESENTATION	CASCADE	DRAGSETH, PAULA ANN	5/11/2015	3	\$31.35	
CERTIFICATED	SIP PREP/PRESENTATION	TERMINAL PARK	FINLEY, ROSE	6/8/2015	3	\$33.82	
CERTIFICATED	SRA PRESENTATION	DSL	DOVE, CONNIE	4/30/2015		STIPEND \$150	
CERTIFICATED	TEACHER LEADERSHIP TRNGS	PIONEER	ADAMS, JESSICA JEAN	6/1/2015	14	\$27.39	
CERTIFICATED	TEACHER LEADERSHIP TRNGS	EVERGREEN HTS	AKINS, LAURE L	6/1/2015	14	\$31.78	

CERTIFICATED	TEACHER LEADERSHIP TRNGS	RAINIER	ALLISON, DEBORAH	6/1/2015	14	\$50.93
CERTIFICATED	TEACHER LEADERSHIP TRNGS	PIONEER	ANDEREGG, ALICIA MARIE	6/1/2015	14	\$27.02
CERTIFICATED	TEACHER LEADERSHIP TRNGS	TERMINAL PARK	ANDERSEN, STEPHANIE LYNN	6/1/2015	14	\$50.93
CERTIFICATED	TEACHER LEADERSHIP TRNGS	ILALKO	ANDERSON, AMY LYNN	6/1/2015	14	\$31.78
CERTIFICATED	TEACHER LEADERSHIP TRNGS	LEA HILL	ANDERSON, KELSIE JAYNE	6/1/2015	14	\$28.13
CERTIFICATED	TEACHER LEADERSHIP TRNGS	GILDO REY	ARAMBURU, CARLY NOEL	6/1/2015	14	\$27.02
CERTIFICATED	TEACHER LEADERSHIP TRNGS	AUBURN MOUNTAINVIEW	AUSTIN, STEPHANIE RACHELL	6/1/2015	14	\$50.93
CERTIFICATED	TEACHER LEADERSHIP TRNGS	ILALKO	BARUCK, STEPHEN L	6/1/2015	14	\$50.93
CERTIFICATED	TEACHER LEADERSHIP TRNGS	HAZELWOOD	BOLL, KONNI K	6/1/2015	14	\$40.66
CERTIFICATED	TEACHER LEADERSHIP TRNGS	WEST AUBURN	BOSCH, MICHAEL HENRY	6/1/2015	14	\$30.51
CERTIFICATED	TEACHER LEADERSHIP TRNGS	RAINIER	BRENNAN, TRACY L	6/1/2015	14	\$39.45
CERTIFICATED	TEACHER LEADERSHIP TRNGS	MT. BAKER	BROWN, JASON WAYNE	6/1/2015	14	\$41.27
CERTIFICATED	TEACHER LEADERSHIP TRNGS	CASCADE	BROWN, SHAYNA ELIZABETH	6/1/2015	14	\$44.47
CERTIFICATED	TEACHER LEADERSHIP TRNGS	MT. BAKER	BUHR, SUSAN M	6/1/2015	14	\$40.06
CERTIFICATED	TEACHER LEADERSHIP TRNGS	PIONEER	BURGER, SUSAN ELIZABETH	6/1/2015	14	\$27.39
CERTIFICATED	TEACHER LEADERSHIP TRNGS	MT. BAKER	CALKINS, DEBORAH MARIE	6/1/2015	14	\$41.90
CERTIFICATED	TEACHER LEADERSHIP TRNGS	AUBURN SR HIGH	CALLERO, ANTHONY E	6/1/2015	14	\$50.93
CERTIFICATED	TEACHER LEADERSHIP TRNGS	AHS	CAPPS, JASON	6/1/2015	14	\$50.93
CERTIFICATED	TEACHER LEADERSHIP TRNGS	MT. BAKER	CARNAHAN, ERIN B	6/1/2015	14	\$48.67
CERTIFICATED	TEACHER LEADERSHIP TRNGS	OLYMPIC	CARNEY, ORLYN M	6/1/2015	14	\$47.22
CERTIFICATED	TEACHER LEADERSHIP TRNGS	HAZELWOOD	CARTER, AMBER GAYLE	6/1/2015	14	\$43.17
CERTIFICATED	TEACHER LEADERSHIP TRNGS	MT. BAKER	CARTER, JEREMIAH DANIEL	6/1/2015	14	\$41.27
CERTIFICATED	TEACHER LEADERSHIP TRNGS	ARTHUR JACOBSEN	CASTRO, JENNIFER OPENIANO	6/1/2015	14	\$32.76
CERTIFICATED	TEACHER LEADERSHIP TRNGS	AUBURN MOUNTAINVIEW	CHMIL, VIKTORIYA	6/1/2015	14	\$27.02
CERTIFICATED	TEACHER LEADERSHIP TRNGS	ALPAC	CICERO, TANYA Y	6/1/2015	14	\$50.93
CERTIFICATED	TEACHER LEADERSHIP TRNGS	MT. BAKER	CLARK, ANNE S	6/1/2015	14	\$45.79
CERTIFICATED	TEACHER LEADERSHIP TRNGS	OLYMPIC	CLARK, LISA C	6/1/2015	14	\$50.93
CERTIFICATED	TEACHER LEADERSHIP TRNGS	AUBURN SR HIGH	CLOW, LEE ALLAN	6/1/2015	14	\$32.40
CERTIFICATED	TEACHER LEADERSHIP TRNGS	OLYMPIC	COBURN, MICHELLE M	6/1/2015	14	\$46.60
CERTIFICATED	TEACHER LEADERSHIP TRNGS	AUBURN HIGH	COCKCROFT, ELSBETH CATHERIN	6/1/2015	14	\$47.22
CERTIFICATED	TEACHER LEADERSHIP TRNGS	AUBURN HIGH	COLE, BRANDI NOELLE	6/1/2015	14	\$37.12
CERTIFICATED	TEACHER LEADERSHIP TRNGS	RAINIER	COX, DAVID-MICHAEL	6/1/2015	14	\$45.83
CERTIFICATED	TEACHER LEADERSHIP TRNGS	WEST AUBURN	CRATER, LAUREN BREANNE	6/1/2015	14	\$29.25
CERTIFICATED	TEACHER LEADERSHIP TRNGS	AUBURN MOUNTAINVIEW	DAVIDSON, CARY WARREN	6/1/2015	14	\$45.82
CERTIFICATED	TEACHER LEADERSHIP TRNGS	AUBURN RIVERSIDE	DICKSON, GLENN MATTHEW	6/1/2015	14	\$31.35
CERTIFICATED	TEACHER LEADERSHIP TRNGS	RAINIER	DIEBAG, JAMES	6/1/2015	14	\$37.14
CERTIFICATED	TEACHER LEADERSHIP TRNGS	GILDO REY	DISBROW, LAUREL J	6/1/2015	14	\$50.93
CERTIFICATED	TEACHER LEADERSHIP TRNGS	CASCADE	DOZIER, ALETHEA CARLOS	6/1/2015	14	\$37.12
CERTIFICATED	TEACHER LEADERSHIP TRNGS	RAINIER	DUNHAM, RYAN	6/1/2015	14	\$46.60
CERTIFICATED	TEACHER LEADERSHIP TRNGS	MT. BAKER	DURHAM, ANN BABBITT	6/1/2015	14	\$50.93
CERTIFICATED	TEACHER LEADERSHIP TRNGS	ILALKO	DUTOIT, MICHELLE J	6/1/2015	14	\$48.77
CERTIFICATED	TEACHER LEADERSHIP TRNGS	DICK SCOBEE	DWYER, VERONICA JEAN	6/1/2015	14	\$29.27
CERTIFICATED	TEACHER LEADERSHIP TRNGS	AUBURN MOUNTAINVIEW	ECKELMAN, PATRICIA E	6/1/2015	14	\$50.93
CERTIFICATED	TEACHER LEADERSHIP TRNGS	OLYMPIC	ENGLANDER, BRANDY FAITH	6/1/2015	14	\$41.90
CERTIFICATED	TEACHER LEADERSHIP TRNGS	CHINOOK	ERICKSON, SEASAN	6/1/2015	14	\$44.47
CERTIFICATED	TEACHER LEADERSHIP TRNGS	LEA HILL	FETTIG, MICHAEL PATRICK	6/1/2015	14	\$50.93
CERTIFICATED	TEACHER LEADERSHIP TRNGS	GILDO REY	FITZGERALD, WILLIAM MICHAEL	6/1/2015	14	\$28.09
CERTIFICATED	TEACHER LEADERSHIP TRNGS	CASCADE	FONDA, PAULETTE TRACY	6/1/2015	14	\$36.12
CERTIFICATED	TEACHER LEADERSHIP TRNGS	CHINOOK	GALATI, ELIZABETH ANN	6/1/2015	14	\$38.88
CERTIFICATED	TEACHER LEADERSHIP TRNGS	AUBURN RIVERSIDE	GALLINATTI, LISA MARIE	6/1/2015	14	\$50.93
CERTIFICATED	TEACHER LEADERSHIP TRNGS	RAINIER	GIFFORD, ALVIN	6/1/2015	14	\$34.57
CERTIFICATED	TEACHER LEADERSHIP TRNGS	EVERGREEN HTS	GRAB, ARNIE LOUIS	6/1/2015	14	\$50.93
CERTIFICATED	TEACHER LEADERSHIP TRNGS	AUBURN HIGH	GRAFSTROM, KYLE ALLEN	6/1/2015	14	\$32.95
CERTIFICATED	TEACHER LEADERSHIP TRNGS	TERMINAL PARK	GRAGG, JULIE ANNE	6/1/2015	14	\$36.64
CERTIFICATED	TEACHER LEADERSHIP TRNGS	LAKE VIEW	GRECO, GINA A	6/1/2015	14	\$45.83
CERTIFICATED	TEACHER LEADERSHIP TRNGS	RAINIER	GREEN, BETH	6/1/2015	14	\$49.93
CERTIFICATED	TEACHER LEADERSHIP TRNGS	OLYMPIC	GUEST, JOANNA LYNN	6/1/2015	14	\$30.51
CERTIFICATED	TEACHER LEADERSHIP TRNGS	AUBURN MOUNTAINVIEW	HALL, ERIN LEE	6/1/2015	14	\$45.83
CERTIFICATED	TEACHER LEADERSHIP TRNGS	AUBURN HIGH	HANSEN, JESSICA LYNN	6/1/2015	14	\$41.90
CERTIFICATED	TEACHER LEADERSHIP TRNGS	AUBURN HIGH	HANSEN, NECIA LEANN KINCAID	6/1/2015	14	\$34.94

CERTIFICATED	TEACHER LEADERSHIP TRNGS	TERMINAL PARK	HARLOR, KRISTIN	6/1/2015	14	\$27.02
CERTIFICATED	TEACHER LEADERSHIP TRNGS	ALPAC	HARLOR, ROXANNE G	6/1/2015	14	\$34.73
CERTIFICATED	TEACHER LEADERSHIP TRNGS	AUBURN HIGH	HERRERA, MICHAELA M	6/1/2015	14	\$40.66
CERTIFICATED	TEACHER LEADERSHIP TRNGS	OLYMPIC	HOGENSON, LAURA VIRGINIA	6/1/2015	14	\$49.93
CERTIFICATED	TEACHER LEADERSHIP TRNGS	AUBURN HIGH	HOGG, ELAINE M	6/1/2015	14	\$50.93
CERTIFICATED	TEACHER LEADERSHIP TRNGS	AUBURN MOUNTAINVIEW	HOSTETTER, JAYME LYNN	6/1/2015	14	\$50.93
CERTIFICATED	TEACHER LEADERSHIP TRNGS	DICK SCOBEE	JENSEN, STEPHANIE ELIZABETH	6/1/2015	14	\$27.39
CERTIFICATED	TEACHER LEADERSHIP TRNGS	WEST AUBURN	JOHNSON, ANNA A	6/1/2015	14	\$33.12
CERTIFICATED	TEACHER LEADERSHIP TRNGS	ALPAC	JOHNSON, KELLI N	6/1/2015	14	\$37.74
CERTIFICATED	TEACHER LEADERSHIP TRNGS	AUBURN RIVERSIDE	JONES, KYLE BRANDON	6/1/2015	14	\$28.44
CERTIFICATED	TEACHER LEADERSHIP TRNGS	AUBURN MOUNTAINVIEW	KEAGLE, STEPHANIE E	6/1/2015	14	\$40.06
CERTIFICATED	TEACHER LEADERSHIP TRNGS	MT. BAKER	KEATON, LINDSEY CAITLIN	6/1/2015	14	\$28.84
CERTIFICATED	TEACHER LEADERSHIP TRNGS	AUBURN HIGH	KELLER, BRIAN M	6/1/2015	14	\$48.77
CERTIFICATED	TEACHER LEADERSHIP TRNGS	ARTHUR JACOBSEN	KEMP, BRIAN ALAN	6/1/2015	14	\$27.02
CERTIFICATED	TEACHER LEADERSHIP TRNGS	MT. BAKER	KEMP, JAMES J	6/1/2015	14	\$48.77
CERTIFICATED	TEACHER LEADERSHIP TRNGS	MT. BAKER	KEMP, JENNIFER KATHLEEN	6/1/2015	14	\$50.93
CERTIFICATED	TEACHER LEADERSHIP TRNGS	WASHINGTON	KILBURG, KRISTY ANN	6/1/2015	14	\$44.47
CERTIFICATED	TEACHER LEADERSHIP TRNGS	CASCADE	KILLETT, CASEY ANN	6/1/2015	14	\$40.66
CERTIFICATED	TEACHER LEADERSHIP TRNGS	LAKELAND HILLS	KING, MARLA L	6/1/2015	14	\$42.54
CERTIFICATED	TEACHER LEADERSHIP TRNGS	LAKELAND HILLS	KNAPP, STEPHANIE CHRISTINE	6/1/2015	14	\$41.90
CERTIFICATED	TEACHER LEADERSHIP TRNGS	MT. BAKER	LANTZ, KATHY	6/1/2015	14	\$33.62
CERTIFICATED	TEACHER LEADERSHIP TRNGS	LAKELAND HILLS	LEAF, VICKIE LYNN	6/1/2015	14	\$50.93
CERTIFICATED	TEACHER LEADERSHIP TRNGS	LEA HILL	LEAF-DENT, KATHERINE MARIE	6/1/2015	14	\$29.25
CERTIFICATED	TEACHER LEADERSHIP TRNGS	AUBURN MOUNTAINVIEW	LEE, JESSICA C	6/1/2015	14	\$40.66
CERTIFICATED	TEACHER LEADERSHIP TRNGS	AUBURN MOUNTAINVIEW	LEMANSKI, NATHAN RAYMOND	6/1/2015	14	\$34.98
CERTIFICATED	TEACHER LEADERSHIP TRNGS	RAINIER	LEWIS, BRENDA	6/1/2015	14	\$44.47
CERTIFICATED	TEACHER LEADERSHIP TRNGS	ALPAC	LEYDA, BRENDA M	6/1/2015	14	\$50.93
CERTIFICATED	TEACHER LEADERSHIP TRNGS	MT. BAKER	LUBASH, DENNIS	6/1/2015	14	\$50.93
CERTIFICATED	TEACHER LEADERSHIP TRNGS	WEST AUBURN	LUDWIGSON, DEREK SCOTT	6/1/2015	14	\$28.09
CERTIFICATED	TEACHER LEADERSHIP TRNGS	CASCADE	LUETTGEN, SANDRA L	6/1/2015	14	\$50.93
CERTIFICATED	TEACHER LEADERSHIP TRNGS	RAINIER	LUONG, JACOB	6/1/2015	14	\$50.93
CERTIFICATED	TEACHER LEADERSHIP TRNGS	AUBURN RIVERSIDE	MALONE, CORIN G	6/1/2015	14	\$41.90
CERTIFICATED	TEACHER LEADERSHIP TRNGS	AUBURN RIVERSIDE	MARTINSON, SHAWN A	6/1/2015	14	\$50.93
CERTIFICATED	TEACHER LEADERSHIP TRNGS	OLYMPIC	MASON, JERI LYNN	6/1/2015	14	\$45.79
CERTIFICATED	TEACHER LEADERSHIP TRNGS	ARTHUR JACOBSEN	MCGAUGHEY, DEBORA K	6/1/2015	14	\$45.83
CERTIFICATED	TEACHER LEADERSHIP TRNGS	AUBURN RIVERSIDE	MCKEEHAN, JANALYN RICHINS	6/1/2015	14	\$50.93
CERTIFICATED	TEACHER LEADERSHIP TRNGS	PIONEER	MCLAUGHLIN, MELYSSA ANNE	6/1/2015	14	\$27.02
CERTIFICATED	TEACHER LEADERSHIP TRNGS	CASCADE	MESSMER, MELISSA KAYE	6/1/2015	14	\$43.84
CERTIFICATED	TEACHER LEADERSHIP TRNGS	MT. BAKER	MILLANG, SUSAN D	6/1/2015	14	\$50.93
CERTIFICATED	TEACHER LEADERSHIP TRNGS	LAKE VIEW	MILLGARD, JANET LEE	6/1/2015	14	\$50.93
CERTIFICATED	TEACHER LEADERSHIP TRNGS	OLYMPIC	MILLICAN, SCOTT E	6/1/2015	14	\$48.67
CERTIFICATED	TEACHER LEADERSHIP TRNGS	AUBURN RIVERSIDE	MONSEN, ANDREW DAVID	6/1/2015	14	\$49.93
CERTIFICATED	TEACHER LEADERSHIP TRNGS	LAKE VIEW	MOORE, ERIKA MARIE	6/1/2015	14	\$41.90
CERTIFICATED	TEACHER LEADERSHIP TRNGS	AUBURN RIVERSIDE	MORGAN, ROBERT LEROY	6/1/2015	14	\$50.93
CERTIFICATED	TEACHER LEADERSHIP TRNGS	EVERGREEN HTS	MUSIAL, DIANA ROSE	6/1/2015	14	\$37.00
CERTIFICATED	TEACHER LEADERSHIP TRNGS	OLYMPIC	MUXEN, MATTHEW A	6/1/2015	14	\$50.93
CERTIFICATED	TEACHER LEADERSHIP TRNGS	ILALCO	MYKA, TAMMY MICHELLE	6/1/2015	14	\$34.57
CERTIFICATED	TEACHER LEADERSHIP TRNGS	AUBURN RIVERSIDE	OLSON, KEVIN LEE	6/1/2015	14	\$50.93
CERTIFICATED	TEACHER LEADERSHIP TRNGS	GILDO REY	OLSON, KRISTINA ISABEL	6/1/2015	14	\$29.68
CERTIFICATED	TEACHER LEADERSHIP TRNGS	WEST AUBURN	PARSONS, THOMAS JAMES	6/1/2015	14	\$30.61
CERTIFICATED	TEACHER LEADERSHIP TRNGS	WASHINGTON	PAULSON, SUSAN HOLLY	6/1/2015	14	\$50.93
CERTIFICATED	TEACHER LEADERSHIP TRNGS	AUBURN HIGH	PAUSTIAN, ANTHONY D	6/1/2015	14	\$28.48
CERTIFICATED	TEACHER LEADERSHIP TRNGS	MT. VIEW SR HI	PETERSON, TELIA SHONTAE	6/1/2015	14	\$28.09
CERTIFICATED	TEACHER LEADERSHIP TRNGS	WASHINGTON	PETTIT, JULIE ANN	6/1/2015	14	\$30.39
CERTIFICATED	TEACHER LEADERSHIP TRNGS	DICK SCOBEE	PFAB, TIMOTHY JOHN	6/1/2015	14	\$48.77
CERTIFICATED	TEACHER LEADERSHIP TRNGS	AUBURN HIGH	PICATTI-BAKER, MOLLY KATHRYN	6/1/2015	14	\$41.27
CERTIFICATED	TEACHER LEADERSHIP TRNGS	RAINIER	PORTMANN, KELLY	6/1/2015	14	\$48.77
CERTIFICATED	TEACHER LEADERSHIP TRNGS	OLYMPIC	PRICE, CHRISTY ANNE	6/1/2015	14	\$38.67
CERTIFICATED	TEACHER LEADERSHIP TRNGS	AUBURN HIGH	PRICE, JON WILLIAM	6/1/2015	14	\$50.93
CERTIFICATED	TEACHER LEADERSHIP TRNGS	OLYMPIC	RICHARDSON, MOLLY	6/1/2015	14	\$33.82

CERTIFICATED	TEACHER LEADERSHIP TRNGS	GILDO REY	RIDGE, KYLE JOHN	6/1/2015	14	\$27.02
CERTIFICATED	TEACHER LEADERSHIP TRNGS	MT. BAKER	ROGERS, STACEY KATHLEEN O.	6/1/2015	14	\$43.75
CERTIFICATED	TEACHER LEADERSHIP TRNGS	CHINOOK	ROSHAU, MEGAN ELLEN	6/1/2015	14	\$28.84
CERTIFICATED	TEACHER LEADERSHIP TRNGS	AUBURN MOUNTAINVIEW	RUMBAUGH, WAYNE D	6/1/2015	14	\$50.93
CERTIFICATED	TEACHER LEADERSHIP TRNGS	AUBURN RIVERSIDE	SAARENAS, ROBYN NEIGEL	6/1/2015	14	\$50.93
CERTIFICATED	TEACHER LEADERSHIP TRNGS	AMHS	SAMUELSON, SARAH	6/1/2015	14	\$43.17
CERTIFICATED	TEACHER LEADERSHIP TRNGS	AUBURN RIVERSIDE	SANDLAND, GINA M	6/1/2015	14	\$48.77
CERTIFICATED	TEACHER LEADERSHIP TRNGS	LAKELAND HILLS	SCHUMAN, SUSAN MARIE	6/1/2015	14	\$50.93
CERTIFICATED	TEACHER LEADERSHIP TRNGS	AUBURN HIGH	SEIDL, DYANN	6/1/2015	14	\$50.93
CERTIFICATED	TEACHER LEADERSHIP TRNGS	AUBURN HIGH	SHOEMAKER, JAVID KYLE	6/1/2015	14	\$30.51
CERTIFICATED	TEACHER LEADERSHIP TRNGS	AUBURN MOUNTAINVIEW	SHRADER, JASON KHOA	6/1/2015	14	\$38.67
CERTIFICATED	TEACHER LEADERSHIP TRNGS	CHINOOK	SIGNAL, MICHAEL ANTHONY	6/1/2015	14	\$37.74
CERTIFICATED	TEACHER LEADERSHIP TRNGS	WASHINGTON	SMITH, TORI ANN	6/1/2015	14	\$40.06
CERTIFICATED	TEACHER LEADERSHIP TRNGS	RAINIER	SNYDER, CHERYL	6/1/2015	14	\$48.77
CERTIFICATED	TEACHER LEADERSHIP TRNGS	AUBURN RIVERSIDE	STRAND, BRYCE JAMES	6/1/2015	14	\$47.22
CERTIFICATED	TEACHER LEADERSHIP TRNGS	OLYMPIC	STROBEL, KIMBERLY A	6/1/2015	14	\$50.93
CERTIFICATED	TEACHER LEADERSHIP TRNGS	AHS	STUBBLEFIELD, ANGELA	6/1/2015	14	\$45.79
CERTIFICATED	TEACHER LEADERSHIP TRNGS	MT. BAKER	SWANSON, PENNI J	6/1/2015	14	\$50.93
CERTIFICATED	TEACHER LEADERSHIP TRNGS	AUBURN MOUNTAINVIEW	TAUZER, LESLIE J	6/1/2015	14	\$47.81
CERTIFICATED	TEACHER LEADERSHIP TRNGS	ARTHUR JACOBSEN	TAYLOR, TIFFANY ELIZABETH	6/1/2015	14	\$33.12
CERTIFICATED	TEACHER LEADERSHIP TRNGS	AUBURN HIGH	TELFORD, CHRISTOPHER G	6/1/2015	14	\$32.65
CERTIFICATED	TEACHER LEADERSHIP TRNGS	MT. BAKER	TOY, DIXIE L	6/1/2015	14	\$50.93
CERTIFICATED	TEACHER LEADERSHIP TRNGS	EVERGREEN HTS	UDD, JESSICA LYNN	6/1/2015	14	\$27.39
CERTIFICATED	TEACHER LEADERSHIP TRNGS	AUBURN RIVERSIDE	VAN EATON, MICHAEL	6/1/2015	14	\$50.93
CERTIFICATED	TEACHER LEADERSHIP TRNGS	MT. BAKER	WALKER, DENA LYNN	6/1/2015	14	\$50.93
CERTIFICATED	TEACHER LEADERSHIP TRNGS	CASCADE	WATKINS, KANIKA LEWELYN	6/1/2015	14	\$48.77
CERTIFICATED	TEACHER LEADERSHIP TRNGS	TERMINAL PARK	WHITE, BETH ANN	6/1/2015	14	\$31.35
CERTIFICATED	TEACHER LEADERSHIP TRNGS	HAZELWOOD	WICKSTROM, ERIN L	6/1/2015	14	\$49.93
CERTIFICATED	TEACHER LEADERSHIP TRNGS	HAZELWOOD	WICKSTROM, SCOTT	6/1/2015	14	\$50.93
CERTIFICATED	TEACHER LEADERSHIP TRNGS	TERMINAL PARK	WILLIAMS, CHRISTINA LYNN	6/1/2015	14	\$50.93
CERTIFICATED	TEACHER LEADERSHIP TRNGS	RAINIER	WILSON, CHRISTINE	6/1/2015	14	\$47.22
CERTIFICATED	TEACHER LEADERSHIP TRNGS	DICK SCOBEE	WISENER, AIMEE JILLENE	6/1/2015	14	\$28.48
CERTIFICATED	TEACHER LEADERSHIP TRNGS	AUBURN RIVERSIDE	WRIGHT, TIMOTHY A	6/1/2015	14	\$50.93
CERTIFICATED	TEACHER LEADERSHIP TRNGS	AUBURN RIVERSIDE	YZAGUIRRE, NOE MARCUS	6/1/2015	14	\$36.64
CERTIFICATED	TITLE 1 TRNG	WEST AUBURN	PETER, CATHERINE	4/30/2015	1.5	\$48.77
CERTIFICATED	TITLE-LAP MEETINGS	ARTHUR JACOBSEN	BECK, THELMA YURI	9/1/2014	12	\$50.93
CERTIFICATED	TITLE-LAP MEETINGS	WEST AUBURN SR	BOSCH, MICHAEL HENRY	9/1/2014	12	\$30.51
CERTIFICATED	TITLE-LAP MEETINGS	RAINIER	BRENNAN, TRACY L	9/1/2014	12	\$39.45
CERTIFICATED	TITLE-LAP MEETINGS	LEA HILL	BUTLER, REGINA M	9/1/2014	12	\$48.04
CERTIFICATED	TITLE-LAP MEETINGS	GILDO REY	CARR, KARIN	9/1/2014	12	\$34.19
CERTIFICATED	TITLE-LAP MEETINGS	OLYMPIC	CHASE, JANINE IKUE	9/1/2014	12	\$29.23
CERTIFICATED	TITLE-LAP MEETINGS	MT. BAKER	DETWILER, KIMBERLY FLINT	9/1/2014	12	\$50.93
CERTIFICATED	TITLE-LAP MEETINGS	CASCADE	DRAGSETH, PAULA ANN	9/1/2014	12	\$31.35
CERTIFICATED	TITLE-LAP MEETINGS	WASHINGTON	EKSTROM, CORY ALAN	9/1/2014	12	\$31.45
CERTIFICATED	TITLE-LAP MEETINGS	EVERGREEN HTS	ERICKSON, STACI R	9/1/2014	12	\$48.77
CERTIFICATED	TITLE-LAP MEETINGS	CHINOOK	HENDRICKS, JESSICA LYNN	9/1/2014	12	\$34.19
CERTIFICATED	TITLE-LAP MEETINGS	LAKELAND HILLS	HESS, LYN SOULAGNET	9/1/2014	12	\$50.93
CERTIFICATED	TITLE-LAP MEETINGS	PIONEER	HUPPERTEN, MICHELLE R S	9/1/2014	12	\$50.93
CERTIFICATED	TITLE-LAP MEETINGS	OLYMPIC	JENSEN, LINDA D	9/1/2014	12	\$37.14
CERTIFICATED	TITLE-LAP MEETINGS	CASCADE	JONASSON, KARLY NICOLE	9/1/2014	12	\$29.63
CERTIFICATED	TITLE-LAP MEETINGS	ALPAC	KESSLER, CHELSI MARIE	9/1/2014	12	\$33.82
CERTIFICATED	TITLE-LAP MEETINGS	TERMINAL PARK	KUZARO, JESSLYN R K	9/1/2014	12	\$49.93
CERTIFICATED	TITLE-LAP MEETINGS	ALPAC	LAUKALA, RACHEL M	9/1/2014	12	\$27.73
CERTIFICATED	TITLE-LAP MEETINGS	PIONEER	LEWIS, AMANDA P	9/1/2014	12	\$27.02
CERTIFICATED	TITLE-LAP MEETINGS	EVERGREEN HTS	LOCASCIO, ANNE S	9/1/2014	12	\$50.93
CERTIFICATED	TITLE-LAP MEETINGS	EVERGREEN HTS	LOGAN, CAROLYN C	9/1/2014	12	\$40.66
CERTIFICATED	TITLE-LAP MEETINGS	MT.VIEW SR HI	O'BRIEN, LEAHMARIE	9/1/2014	12	\$45.83
CERTIFICATED	TITLE-LAP MEETINGS	GILDO REY	PAGORIA-O'NEILL, ANNMARIE	9/1/2014	12	\$37.00
CERTIFICATED	TITLE-LAP MEETINGS	DICK SCOBEE	RIESTRA, JENNIFER MARIE	9/1/2014	12	\$42.54
CERTIFICATED	TITLE-LAP MEETINGS	HAZELWOOD	SCOTT, ERIN FINLEY	9/1/2014	12	\$50.93

CERTIFICATED	TITLE-LAP MEETINGS	ILALKO	SIEGRIST, JENNIFER IDELL	9/1/2014	12	\$45.83
CERTIFICATED	TITLE-LAP MEETINGS	CHINOOK	SPRING, SARAH LYNN	9/1/2014	12	\$36.37
CERTIFICATED	TITLE-LAP MEETINGS	LEA HILL	ST MARY, SARAH MARIE	9/1/2014	12	\$34.73
CERTIFICATED	TITLE-LAP MEETINGS	LAKE VIEW	STALMASTER, MARGARET K	9/1/2014	12	\$50.93
CERTIFICATED	TURNING POINT RESPONSE	ARTHUR JACOBSEN	SPENCER, JR., ARTHUR	5/21/2015	2	\$50.93
CERTIFICATED	TUTORING	AUBURN HIGH	HALES, KYM	5/15/2015	24	\$33.64

Leave

New Hire

Resignation

CERTIFICATED	ADMINISTRATOR	ADMINISTRATION	LUKE, RODNEY	6/30/2015	RETIREMENT
CERTIFICATED	ADMINISTRATOR	ADMINISTRATION	NEWMAN, MICHAEL	6/30/2015	RETIREMENT
CERTIFICATED	COUNSELOR	AUBURN MOUNTAINVIEW	PAULSON, AMANDA	6/19/2015	EMPLOYMENT ELSEWHERE
CERTIFICATED	TEACHER/FIRST	PIONEER	HYATT, SHUREE	6/18/2015	EMPLOYMENT ELSEWHERE
CERTIFICATED	TEACHER/LEARN. SPEC	LEA HILL	EDWARDS, ELIZABETH	6/18/2015	CHILD REARING
CERTIFICATED	TEACHER/MATH	WEST AUBURN SR	LAUSH JR., LARRY	8/1/2015	RETIREMENT
CERTIFICATED	TEACHER/MUSIC	HAZELWOOD	DIEHM, TERRI	6/18/2015	RETIREMENT
CERTIFICATED	TEACHER/SECOND	PIONEER	FORD, JENNIFER	6/18/2015	EMPLOYMENT ELSEWHERE
CERTIFICATED	TEACHER/THIRD	PIONEER	O'REILLY, MELISSA	6/18/2015	EMPLOYMENT ELSEWHERE
CERTIFICATED	TEACHER/TOSA	ANNEX	BACHELDER, PATRICIA	6/19/2015	PERSONAL
CERTIFICATED	TEACHER/TOSA	CHINOOK	WOODING, CHRISTINA	6/18/2015	EMPLOYMENT ELSEWHERE

PERSONNEL REPORT - CLASSIFIED

Curriculum-Noncurriculum

CLASSIFIED	ASSISTANT - TITLE PROF DEV/ACADEMIC VOCAB INSERVICE	AUBURN RIVERSIDE	DUDLEY, TONI	2/26/2015	3	\$16.53
CLASSIFIED	ASSISTANT COACH - BASEBALL	RAINIER	BLOOM, BRIAN	3/23/2015	150	STIPEND - \$3,206
CLASSIFIED	CONSULTANT - DRAMA	RAINIER	ROWDEN, JEFFERY	1/5/2015	37.5	\$20.00
CLASSIFIED	COSTUMING - DRAMA	AUBURN HIGH	BARTELT, JEANINE	9/1/2014	23	\$21.01
CLASSIFIED	EXTRA HOURS - ANTI BULLYING WORKSHOP	ANNEX	DRAY, DIANA	6/9/2015	7	\$16.69
CLASSIFIED	EXTRA HOURS - APSF COMMUNITY GYM EVENT	AUBURN HIGH	BALL, LORETTA	6/1/2015	7.5	\$18.84
CLASSIFIED	EXTRA HOURS - APSF COMMUNITY GYM EVENT	AUBURN HIGH	BALL, LORETTA	6/6/2015	8	\$18.81
CLASSIFIED	EXTRA HOURS - CHILDCARE ART PARENT WORKSHOP	ANNEX	DRAY, DIANA	6/3/2015	3	\$16.69
CLASSIFIED	EXTRA HOURS - CHILDCARE ART PARENT WORKSHOP	ANNEX	MAY, LAEL	6/3/2015	3	\$16.84
CLASSIFIED	EXTRA HOURS - CHILDCARE ART PARENT WORKSHOP	ANNEX	SCOTT, BARBARA	6/3/2015	3	\$16.52
CLASSIFIED	EXTRA HOURS - GRADUATION SOUND	AUBURN HIGH	DUNAWAY, EDDIE	6/14/2015		STIPEND - \$500
CLASSIFIED	EXTRA HOURS - LAP PARENT INVOLVEMENT HOME VISITS	LEA HILL	GARDNER, LYNNETTE	5/1/2015	6	\$16.53
CLASSIFIED	EXTRA HOURS - STUDENT ENROLLMENT	WEST AUBURN	BLACK, KRISTINA	5/27/2015	5	\$20.71
CLASSIFIED	EXTRA HOURS - STUDENT SUPPORT	WASHINGTON	DRAY, DIANA	4/21/2015	1	\$16.69
CLASSIFIED	POST SEASON PAY - BOYS' TRACK	AUBURN HIGH	OPEL, ERICK	5/11/2015		STIPEND - \$686
CLASSIFIED	POST SEASON PAY - GIRLS' TRACK	AUBURN RIVERSIDE	KROTZER, KENDALL	5/11/2015		STIPEND - \$686
CLASSIFIED	POST SEASON PAY - ATHLETIC TRAINER	AUBURN MOUNTAINVIEW	OSTRANDER, TIFFANY	5/4/2015		STIPEND - \$1,772
CLASSIFIED	POST SEASON PAY - BASEBALL	AUBURN RIVERSIDE	BARTLETT, TIMOTHY	5/11/2015		STIPEND - \$1,329
CLASSIFIED	POST SEASON PAY - BASEBALL	AUBURN MOUNTAINVIEW	SCHROEDER, CHARLES	5/4/2015		STIPEND - \$343
CLASSIFIED	POST SEASON PAY - BOYS' GOLF	AUBURN HIGH	SAGLE, JEREMY	4/27/2015		STIPEND - \$2,215
CLASSIFIED	POST SEASON PAY - BOYS' SOCCER	AUBURN MOUNTAINVIEW	BECERRA OROZCO, FERNANDO	5/11/2015		STIPEND - \$686
CLASSIFIED	POST SEASON PAY - BOYS' TRACK	AUBURN MOUNTAINVIEW	GOBROSKI, CRAIG	5/11/2015		STIPEND - \$1,029
CLASSIFIED	POST SEASON PAY - BOYS' TRACK	AUBURN HIGH	IRWIN, DANIEL	5/11/2015		STIPEND - \$686
CLASSIFIED	POST SEASON PAY - BOYS' TRACK	AUBURN RIVERSIDE	JONES, ERIC	5/11/2015		STIPEND - \$343
CLASSIFIED	POST SEASON PAY - BOYS' TRACK	AUBURN MOUNTAINVIEW	LARSON, ABBY	5/11/2015		STIPEND - \$1,029
CLASSIFIED	POST SEASON PAY - BOYS' TRACK	AUBURN HIGH	MINUTOLI, RICHARD	5/11/2015		STIPEND - \$686
CLASSIFIED	POST SEASON PAY - FASTPITCH	AUBURN MOUNTAINVIEW	HERREN, KRISTIN	5/11/2015		STIPEND - \$343
CLASSIFIED	POST SEASON PAY - GIRLS' TENNIS	AUBURN RIVERSIDE	BARNES, ALEX	5/11/2015		STIPEND - \$686
CLASSIFIED	POST SEASON PAY - GIRLS' TRACK	AUBURN RIVERSIDE	CARDENAS, GINA	5/11/2015		STIPEND - \$686
CLASSIFIED	POST SEASON PAY - GIRLS' TRACK	AUBURN MOUNTAINVIEW	GIBBONS, BENJAMIN	5/11/2015		STIPEND - \$1,029
CLASSIFIED	POST SEASON PAY - GIRLS' TRACK	AUBURN MOUNTAINVIEW	STRANACK, ANDREW	5/11/2015		STIPEND - \$1,029
CLASSIFIED	POST SEASON PAY - GIRLS' WATERPOLO	AUBURN RIVERSIDE	JACKSON, BLAIR	5/11/2015		STIPEND - \$686

New Hire

CLASSIFIED	BUS DRIVER	TRANSPORTATION	MCATEE, BRUCE	6/4/2015	4.5	\$21.47
------------	------------	----------------	---------------	----------	-----	---------

Rehire

Resignation

CLASSIFIED	PARA-EDUCATOR CULINARY ARTS	AUBURN HIGH	MATHEWS, MARY	6/19/2015		PERSONAL
CLASSIFIED	PARA-EDUCATOR LAP	LAKELAND HILLS	JONES, NANCY	6/18/2015		PERSONAL
CLASSIFIED	PARA-EDUCATOR TITLE	TERMINAL PARK	SMAY, GENELLE	6/18/2015		RETIREMENT

Supervision

Student

CLASSIFIED	LIFEGUARD	POOL	FERGUSON, TY	6/9/2015		\$9.47
CLASSIFIED	LIFEGUARD	POOL	ODELL, RYAN	5/15/2015		\$9.47
CLASSIFIED	LIFEGUARD	POOL	SCHWAB, BENJAMIN	6/9/2015		\$9.47
CLASSIFIED	LIFEGUARD	POOL	WILLIAMS, NATALIE	6/4/2015		\$9.47

BUILDING PROGRAM

1. Auburn High School Network Integration Project

Attached is a copy of Change Order No. 4 for the Auburn High School Network Integration project which should be considered to permit a change in the construction contract amount.

Original Contract	\$595,532.98
Previously Approved	68,995.27
Change Order No. 4	+\$ 4,159.90
New Contract Amount	<u>\$668,688.15</u>

Bob Kenworthy, assistant director of capital projects, will be present to recommend acceptance of this change order.

Recommendation: That Change Order No. 4 be accepted for the Auburn High School Network Integration project and the contract amount be increased by \$4,159.90 for a new contract amount of \$668,688.15.

2. Auburn High School Modernization and Reconstruction Project

Attached are copies of Change Order Nos. 72, 73, 74, 75, and 76 for the Auburn High School Modernization and Reconstruction project which should be considered to permit a change in the construction contract amount and contract time.

Original Contract	\$80,570,700.00
Previously Approved	3,939,600.00
Change Order No. 72	41,464.00
Change Order No. 73	80,834.00
Change Order No. 74	30,603.00
Change Order No. 75	47,493.00
Change Order No. 76	+\$ 106,003.00
New Contract Amount	<u>\$84,816,697.00</u>

Change Order No. 75:

- 21 day increase in contract time for Auto Shop masonry and metal siding.
- 21 day increase in contract time for Main Gymnasium north exterior wall work.

Bob Kenworthy will be present to recommend acceptance of these change orders.

Recommendation: That Change Order Nos. 72, 73, 74, 75 and 76 be accepted for the Auburn High School Modernization and Reconstruction project and the contract amount be increased by \$306,397.00 for a new contract amount of \$84,816,697.00, and the contract time for Auto Shop masonry and metal siding work be increased by 21 days and the contract time for Main Gymnasium north exterior wall work be increased by 21 days.

Change Order

PROJECT:	Auburn High School Network Integration Project	CHANGE ORDER NO.:	004
OWNER:	Auburn School District #408 915 Fourth Street NE Auburn, WA 98002	DATE:	6/1/2015
TO CONTRACTOR:	Ednetics, Inc. 971 South Clearwater Loop Post Falls, ID 83854	CONTRACT DATED:	9/20/2013
		ENGINEER'S PROJECT NO.:	10145.09
		ENGINEER:	Hargis Engineers, Inc. 1201 3 rd Ave., Suite 600 Seattle, WA 98101

The Contract is changed as follows:

1. PR-02:	Relocate network equipment installed temporarily in Auto Shop and Temporary Classroom locations to permanent locations.	ADD	\$4,159.90
-----------	---	-----	------------

Total this Change Order: ADD \$4,159.90

The original Contract Sum was	\$595,532.98
Net change by previously authorized Change Orders	\$68,995.27
The Contract Sum prior to this Change Order was	\$ 664,528.25
The Contract Sum will be <u>increased</u> by this change order	\$4,159.90
The new Contract Sum including this Change Order will be	\$ 668,688.15

The Contract Time will not be changed.

Hargis Engineers, Inc.
1201 3rd Ave., Suite 600
Seattle, WA 98101

Auburn School District #408
915 Fourth Street NE
Auburn, WA 98002

Ednetics, Inc.
971 South Clearwater Loop
Post Falls, ID 83854

By: Paul Robaidek

By: Michael Newman

By: Lena Cress


Signature

Signature


Signature

Date: 6/12/15

Date: _____

Date: 6/16/2015

Change Order

PROJECT: AUBURN HIGH SCHOOL MODERNIZATIONS
& RECONSTRUCTION
800 Fourth Street NE, Auburn, WA 98002

CHANGE ORDER NO.: 72

DATE: June 16, 2015

TO CONTRACTOR: Lydig Construction Company
3180 139th Ave SE, Suite 110
Bellevue, WA 98005

CONTRACT DATED: February 18, 2013

ARCHITECT'S PROJECT NO.: 121-10016

The Contract is changed as follows:

1. PR-104	Modify soil treatment at porous paving.	(\$4,183.00)
2. PR-159	Modify gates at Horticulture area.	\$1,948.00
3. CCA-170	Modify gate at east parking lot.	\$4,669.00
4. CCA-215	Repair irrigation system at Washington Elementary School.	\$3,165.00
5. CCA-240	Provide excavation for electrical power to MSB #2.	\$16,437.00
6. CCA-338	Provide storm drain lines for Area K downspouts.	\$12,784.00
7. CCA-392	Provide storm drain lines for Area F and G downspouts.	\$ 6,644.00
	Total This Change Order	\$41,464.00

The original Contract Sum was	\$	80,570,700.00
Net change by previously authorized Change Orders	\$	3,939,600.00
The Contract Sum prior to this Change Order was	\$	84,510,300.00
The Contract Sum will be increased by this change order	\$	41,464.00
The new Contract Sum including this Change Order will be	\$	84,551,764.00


The Contract Time will remain unchanged by 0 days
The date of Substantial Completion as of the date of this Change Order therefore is July 1, 2016

Pursuant to the Contract, the execution of this Change Order constitutes a waiver of claims by the Contractor arising out of the Work to be performed or deleted pursuant to this Change Order, except as specifically described herein. Reservation of rights will be deemed waived and are void unless the reserved rights are specifically described in detail to the satisfaction of the Owner and are initialed by the Owner.


NAC|Architecture
2025 First Avenue, Suite 300
Seattle, WA 98121

Auburn School District #408
915 Fourth Street NE
Auburn, WA 98002

Lydig Construction Company
3180 139th Ave SE, Suite 110
Bellevue, WA 98005

By: 
Brent Compton
Date: June 16, 2015

By: _____
Michael Newman
Date: _____

By: 
Brandon Watts
Date: 6-17-15

Change Order

PROJECT: AUBURN HIGH SCHOOL MODERNIZATIONS
& RECONSTRUCTION
800 Fourth Street NE, Auburn, WA 98002

CHANGE ORDER NO.: 73

DATE: June 16, 2015

TO CONTRACTOR: Lydig Construction Company
3180 139th Ave SE, Suite 110
Bellevue, WA 98005

CONTRACT DATED: February 18, 2013

ARCHITECT'S PROJECT NO.: 121-10016

The Contract is changed as follows:

1. PR-093	Modify doors 052 and 618-A at PAC corridor.	\$974.00
2. CCA-305	Modify storm drain line at PAC corridor 052.	\$1,039.00
3. CCA-331	Provide structural member for Orchestra Pit wall in PAC.	\$14,823.00
4. CCA-337	Remove portion of existing precast wall at PAC.	\$4,317.00
5. CCA-341	Remove steel beam at PAC elevator.	\$714.00
6. CCA-343	Provide additional sawcutting of PAC stage concrete slab	\$27,956.00
7. CCA-350	Provide steel beam at northeast section of PAC.	\$1,622.00
8. CCA-356	Provide new electrical conduit and wire to PAC lighting devices.	\$15,661.00
9. CCA-358	Provide structure, concrete slab and conduit modifications at PAC.	\$3,785.00
10. CCA-387	Provide overtime work to reduce impact of mold abatement at PAC.	\$3,667.00
11. CCA-388	Provide overtime work to reduce impact of electrical changes at PAC.	\$5,208.00
12. CCA-448	Provide steel beams at PAC exterior windows.	<u>\$ 1,068.00</u>
	Total This Change Order	\$80,834.00

The original Contract Sum was	\$	80,570,700.00
Net change by previously authorized Change Orders	\$	3,981,064.00
The Contract Sum prior to this Change Order was	\$	84,551,764.00
The Contract Sum will be increased by this change order	\$	80,834.00
The new Contract Sum including this Change Order will be	\$	84,632,598.00

The Contract Time will remain unchanged by 0 days
The date of Substantial Completion as of the date of this Change Order therefore is July 1, 2016

Pursuant to the Contract, the execution of this Change Order constitutes a waiver of claims by the Contractor arising out of the Work to be performed or deleted pursuant to this Change Order, except as specifically described herein. Reservation of rights will be deemed waived and are void unless the reserved rights are specifically described in detail to the satisfaction of the Owner and are initialed by the Owner.

NAC|Architecture
2025 First Avenue, Suite 300
Seattle, WA 98121

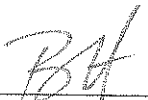
Auburn School District #408
915 Fourth Street NE
Auburn, WA 98002

Lydig Construction Company
3180 139th Ave SE, Suite 110
Bellevue, WA 98005

By: 

By: Brent Compton
Date: June 16, 2015

By: _____
Michael Newman
Date: _____

By: 
Brandon Watts
Date: 6-17-15

Change Order

PROJECT: AUBURN HIGH SCHOOL MODERNIZATIONS
& RECONSTRUCTION
800 Fourth Street NE, Auburn, WA 98002

CHANGE ORDER NO.: 74

DATE: June 16, 2015

TO CONTRACTOR: Lydig Construction Company
3180 139th Ave SE, Suite 110
Bellevue, WA 98005

CONTRACT DATED: February 18, 2013

ARCHITECT'S PROJECT NO.: 121-10016

The Contract is changed as follows:

1. PR-152	Provide additional HVAC controls at Phase 1 rooms.	\$2,596.00
2. CCA-126	Modify doors 162A and 162B.	\$5,451.00
3. CCA-162	Modify hardware at doors 100B, 162B and 413.	\$1,486.00
4. CCA-182	Modify light fixtures at Student Store 129.	\$1,430.00
5. CCA-209	Modify electrical receptacles at Welding Room 510C.	\$219.00
6. CCA-245	Provide additional asbestos abatement in existing Building 100.	\$3,786.00
7. CCA-282	Modify door 012-D.	\$11,849.00
8. CCA-295	Modify walls behind electric ranges in Rooms 162 and 168.	\$ 3,786.00
	Total This Change Order	\$30,603.00

The original Contract Sum was	\$	80,570,700.00
Net change by previously authorized Change Orders	\$	4,061,898.00
The Contract Sum prior to this Change Order was	\$	84,632,598.00
The Contract Sum will be increased by this change order	\$	30,603.00
The new Contract Sum including this Change Order will be	\$	84,663,201.00


The Contract Time will remain unchanged by 0 days
The date of Substantial Completion as of the date of this Change Order therefore is July 1, 2016

Pursuant to the Contract, the execution of this Change Order constitutes a waiver of claims by the Contractor arising out of the Work to be performed or deleted pursuant to this Change Order, except as specifically described herein. Reservation of rights will be deemed waived and are void unless the reserved rights are specifically described in detail to the satisfaction of the Owner and are initialed by the Owner.

NAC|Architecture
2025 First Avenue, Suite 300
Seattle, WA 98121

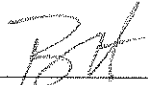
Auburn School District #408
915 Fourth Street NE
Auburn, WA 98002

Lydig Construction Company
3180 139th Ave SE, Suite 110
Bellevue, WA 98005

By: 

By: Brent Compton
Date: June 16, 2015

By: Michael Newman
Date: _____

By: 
By: Brandon Watts
Date: 6-17-15

Change Order

PROJECT: AUBURN HIGH SCHOOL MODERNIZATIONS & RECONSTRUCTION
800 Fourth Street NE, Auburn, WA 98002

CHANGE ORDER NO.: 75

DATE: June 16, 2015

TO CONTRACTOR: Lydig Construction Company
3180 139th Ave SE, Suite 110
Bellevue, WA 98005

CONTRACT DATED: February 18, 2013

ARCHITECT'S PROJECT NO.: 121-10016

The Contract is changed as follows:

1. CCA-342	Modify ductwork in Mechanical Platform 1702.	\$6,776.00
2. CCA-354R	Provide Wall at north end of Mechanical Platform 1700.	\$5,741.00
3. CCA-403	Provide metal furring at north wall of Restroom 722.	\$936.00
4. CCA-422	Delete fire sprinkler system at Gym Lobby exterior canopy.	(\$2,607.00)
5. CCA-429	Provide fire rated wall assembly at top of walls in Main and Auxiliary Gymnasium	\$40,811.00
6. CCA-437	Delete motorized operation of bleachers in Auxiliary Gymnasium.	(\$3,281.00)
7. CCA-455	Modify Greenhouse benches.	\$1,589.00
8. PR-082	Modify wainscot in Restrooms 717A and 720A.	(\$533.00)
9. PR-132R	Delete drinking fountain in Locker Room Restrooms 711C and 712C.	(\$1,540.00)
10. PR-134	Delete contractor supply for Phase 2 soap dispensers.	(\$399.00)
11. PR-160	Increase the Contract Time by 21 days for masonry veneer and metal siding, including associated foundation, wall and roofing work at the Area H Auto Shop Building.	\$0.00
12. PR-161R	Increase the Contract Time by 21 days for masonry veneer, including associated foundation, wall and roofing work at the north elevation of Area G Main Gym.	\$0.00
Total This Change Order		\$47,493.00

The original Contract Sum was	\$	80,570,700.00
Net change by previously authorized Change Orders	\$	4,092,501.00
The Contract Sum prior to this Change Order was	\$	84,663,201.00
The Contract Sum will be increased by this change order	\$	47,493.00
The new Contract Sum including this Change Order will be	\$	84,710,694.00

The Contract Time will be changed Auto Shop Veneer, Area H and Gym North Veneer, Area G 21 days
The date of Substantial Completion as of the date of this Change Order veneer at Area G and H only therefore is:
August 28, 2015

Pursuant to the Contract, the execution of this Change Order constitutes a waiver of claims by the Contractor arising out of the Work to be performed or deleted pursuant to this Change Order, except as specifically described herein. Reservation of rights will be deemed waived and are void unless the reserved rights are specifically described in detail to the satisfaction of the Owner and are initialed by the Owner.

NAC|Architecture
2025 First Avenue, Suite 300
Seattle, WA 98121

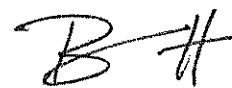
Auburn School District #408
915 Fourth Street NE
Auburn, WA 98002

Lydig Construction Company
3180 139th Ave SE, Suite 110
Bellevue, WA 98005



By: Brent Compton
Date: June 16, 2015

By: Michael Newman
Date: _____



By: Brandon Watts
Date: 6-17-2015

Change Order

PROJECT: AUBURN HIGH SCHOOL MODERNIZATIONS
& RECONSTRUCTION
800 Fourth Street NE, Auburn, WA 98002

CHANGE ORDER NO.: 76

DATE: June 16, 2015

TO CONTRACTOR: Lydig Construction Company
3180 139th Ave SE, Suite 110
Bellevue, WA 98005

CONTRACT DATED: February 18, 2013

ARCHITECT'S PROJECT NO.: 121-10016

The Contract is changed as follows:

1. CCA-270	Relocate existing vent lines at Room 217 in Temp. Classroom Building.	\$3,349.00
2. CCA-272R	Provide enclosure walls at existing tunnels at Temp. Classroom Building.	\$25,420.00
3. CCA-288	Provide interior finish work at rooms in Temp. Classroom Building.	\$74,854.00
4. CCA-320	Provide heating water supply lines at Temp. Classroom Building.	<u>\$2,380.00</u>
	Total This Change Order	\$106,003.00

The original Contract Sum was	\$	80,570,700.00
Net change by previously authorized Change Orders	\$	4,139,994.00
The Contract Sum prior to this Change Order was	\$	84,710,694.00
The Contract Sum will be increased by this change order	\$	106,003.00
The new Contract Sum including this Change Order will be	\$	84,816,697.00

The Contract Time will be unchanged by 0 days
The date of Substantial Completion as of the date of this Change Order therefore is: July 1, 2016

Pursuant to the Contract, the execution of this Change Order constitutes a waiver of claims by the Contractor arising out of the Work to be performed or deleted pursuant to this Change Order, except as specifically described herein. Reservation of rights will be deemed waived and are void unless the reserved rights are specifically described in detail to the satisfaction of the Owner and are initialed by the Owner.

NAC|Architecture
2025 First Avenue, Suite 300
Seattle, WA 98121

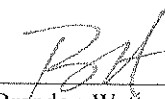
Auburn School District #408
915 Fourth Street NE
Auburn, WA 98002

Lydig Construction Company
3180 139th Ave SE, Suite 110
Bellevue, WA 98005



By: Brent Compton
Date: May 16, 2015

By: Michael Newman
Date:


By: Brandon Watts
Date: 6-17-15

The 2014 Comprehensive Annual Financial Report is included for the board's information.

The following vouchers, as audited and certified by the Auditing Officer as required by RCW 42.24.080, and those expense reimbursement claims certified as required by RCW 42.24.090, are approved for payment. Those payments have been recorded on this listing which has been made available to the board.

As of June 22, 2015, the board, by a _____ vote, approves payments, totaling \$1,345,343.06. The payments are further identified in this document.

Total by Payment Type for Cash Account, US Bank of Washington:
Warrant Numbers 425959 through 426335, totaling \$1,345,343.06

Secretary _____	Board Member _____
Board Member _____	Board Member _____
Board Member _____	Board Member _____

Check Nbr	Vendor Name	Check Date	Check Amount
425959	3 WIRE GROUP INC	06/22/2015	452.72
425960	AA PARTY RENTALS	06/22/2015	904.40
425961	ACADEMY SCHOOLS	06/22/2015	1,220.00
425962	ADI	06/22/2015	140.97
425963	ALLEN GONZALES, LETICIA	06/22/2015	34.50
425964	AMERICAN ACADEMY ~ GRADUATION	06/22/2015	24,795.00
425965	APPLES TO GO	06/22/2015	5,698.00
425966	ARAMARK UNIFORM SERVICES	06/22/2015	103.51
425967	ARCHER PH D, ANITA	06/22/2015	3,500.00
425968	ARNOTT, MEGAN	06/22/2015	5.00
425969	AUBURN CHEVROLET	06/22/2015	217.67
425970	AUBURN SCHOOL DIST 408 **	06/22/2015	1,500.00
425971	AUBURN SENIOR HIGH CULINARY AR	06/22/2015	1,870.00
425972	BATES, CHASE WILLIAM	06/22/2015	70.00
425973	BIRTH TO THREE DEVELOPMENTAL C	06/22/2015	24,800.00
425974	BRYSON SALES & SERVICE	06/22/2015	105.95
425975	BUDGET OFFICE PRODUCTS LLC	06/22/2015	144.54

Check Nbr	Vendor Name	Check Date	Check Amount
425976	CAMBIUM LEARNING/ SOPRIS WEST	06/22/2015	17,635.33
425977	CAROLINA BIOLOGICAL SUPPLY COM	06/22/2015	1,552.43
425978	CARPINITO BROTHERS INC	06/22/2015	683.01
425979	CDW GOVERNMENT INC	06/22/2015	2,317.46
425980	CENGAGE LEARNING	06/22/2015	2,788.84
425981	CENTER FOR STRENGTHENING THE T	06/22/2015	16,260.00
425982	CHILDERES, HONORIA	06/22/2015	11.57
425983	CHILDRENS INSTITUTE FOR LEARNI	06/22/2015	8,856.88
425984	CITY OF PACIFIC	06/22/2015	1,799.57
425985	CLARK, JAMES	06/22/2015	6.57
425986	COASTAL FARM & RANCH	06/22/2015	525.57
425987	CONSOLIDATED ELECTRICAL DIST I	06/22/2015	78.62
425988	CUBILLOS MORENO, GABRIELA	06/22/2015	277.38
425989	CUMMINS INC	06/22/2015	305.49
425990	Vendor Continued Check	06/22/2015	0.00
425991	DAIRY FRESH FARMS INC	06/22/2015	29,883.36
425992	DALEY, ALEXANDRA	06/22/2015	7.24
425993	DAY WIRELESS SYSTEMS	06/22/2015	97.46
425994	DB SECURE SHRED	06/22/2015	134.34
425995	DELL MARKETING LP % DELL USA L	06/22/2015	1,164.06
425996	DEMCO INC	06/22/2015	42.83
425997	DEPT OF LICENSING DRIVER RECOR	06/22/2015	182.00
425998	DEPT OF ENTERPRISE SERVICES	06/22/2015	300.00
425999	DIAZ, JOSE	06/22/2015	27.57
426000	DISCOUNT SCHOOL SUPPLY	06/22/2015	2,512.75

Check Nbr	Vendor Name	Check Date	Check Amount
426001	DON SMALL & SONS OIL DIST CO	06/22/2015	136.66
426002	DRUG FREE BUSINESS	06/22/2015	1,214.40
426003	ECOLAB INC	06/22/2015	148.57
426004	EDEN ADVANCED PEST TECHNOLOGIE	06/22/2015	328.20
426005	EK BEVERAGE COMPANY	06/22/2015	459.90
426006	ELECTROCOM	06/22/2015	273.75
426007	ELECTROCOM	06/22/2015	615.94
426008	EVERGREEN CONSTRUCTION SPECIAL	06/22/2015	10,945.60
426009	EXPANDING YOUR HORIZONS HIGH S	06/22/2015	1,740.00
426010	Vendor Continued Check	06/22/2015	0.00
426011	Vendor Continued Check	06/22/2015	0.00
426012	Vendor Continued Check	06/22/2015	0.00
426013	Vendor Continued Check	06/22/2015	0.00
426014	FERGUSON ENTERPRISES INC #3007	06/22/2015	7,682.10
426015	FLEETPRIDE	06/22/2015	192.75
426016	Vendor Continued Check	06/22/2015	0.00
426017	FOLLETT SCHOOL SOLUTIONS INC	06/22/2015	4,588.98
426018	GALE GROUP	06/22/2015	50.00
426019	GOODY MAN DISTRIBUTING INC	06/22/2015	5,525.43
426020	GRAINGER DEPT 810392688	06/22/2015	678.29
426021	HD FOWLER COMPANY INC	06/22/2015	128.00
426022	HEALTH VENTURE	06/22/2015	1,968.75
426023	HEILBORN, CAROLINE	06/22/2015	1,500.00
426024	HENLEY, AMBER L	06/22/2015	96.57
426025	HOLM, CYNTHIA	06/22/2015	1,375.92

Check Nbr	Vendor Name	Check Date	Check Amount
426026	IMAGE MASTERS INC	06/22/2015	1,565.20
426027	INTERNATIONAL SOCIETY OF CERTI	06/22/2015	765.00
426028	JABJULAN, SANDY	06/22/2015	130.00
426029	JOHNSTONE SUPPLY	06/22/2015	1,637.03
426030	JOSTENS	06/22/2015	774.18
426031	JOSTENS INC	06/22/2015	1,938.38
426032	JW PEPPER & SON INC	06/22/2015	2,184.40
426033	KDL HARDWARE SUPPLY INC	06/22/2015	47.29
426034	KING, KALIN C	06/22/2015	1,564.00
426035	KING COUNTY TREASURY DEPT OF T	06/22/2015	10,980.00
426036	KONICA MINOLTA BUSINESS SOLUTI	06/22/2015	58,661.78
426037	LAKEHAVEN UTILITY DISTRICT	06/22/2015	34.17
426038	LYNN, AMY	06/22/2015	23.00
426039	MACGILL & CO	06/22/2015	113.72
426040	MAXIM STAFFING SOLUTIONS	06/22/2015	5,437.75
426041	MECHANICAL SALES INC	06/22/2015	828.10
426042	MICRO COMPUTER SYSTEMS INC	06/22/2015	519.03
426043	MILLER PAINT CO	06/22/2015	126.79
426044	NUNEZ, JOSEFINA	06/22/2015	21.57
426045	NW BATTERIES	06/22/2015	416.10
426046	NW SCHOOL FOR DEAF & HARD OF H	06/22/2015	3,700.00
426047	OCCUPATIONAL HEALTH SERVICES	06/22/2015	250.00
426048	OETC	06/22/2015	328.80
426049	ORANGE COUNTY DEPT OF EDUCATIO	06/22/2015	180.00
426050	ORCA BOOK PUBLISHERS	06/22/2015	4.98

Check Nbr	Vendor Name	Check Date	Check Amount
426051	ORCA PACIFIC INC	06/22/2015	189.98
426052	OSPI CHILD NUTRITION SERV	06/22/2015	19.65
426053	PACIFIC BOAT TOPS & UPHOLSTERY	06/22/2015	459.90
426054	PASCO SCHOOL DISTRICT #1	06/22/2015	396.13
426055	PATNODE, MARIANNE	06/22/2015	41.90
426056	PETRO CARD	06/22/2015	25,053.07
426057	PPG ARCHITECTURAL FINISHES INC	06/22/2015	1,897.09
426058	PRAXAIR DISTRIBUTION INC	06/22/2015	160.56
426059	PREG O'DONNELL & GILLET PLLC	06/22/2015	6,400.00
426060	PRINT SHOP SERVICES LLC	06/22/2015	35.89
426061	PROGRESSUS THERAPY INC	06/22/2015	18,706.05
426062	PUBLIC CONSULTING GROUP INC	06/22/2015	15,960.08
426063	PUGET SOUND ENERGY ELECTRIC	06/22/2015	100,934.90
426064	Vendor Continued Check	06/22/2015	0.00
426065	PUGET SOUND ENERGY NAT GAS	06/22/2015	18,217.34
426066	PUGET SOUND EDUCATIONAL SERVIC	06/22/2015	39,380.00
426067	QUALITY FENCE BUILDERS INC	06/22/2015	160.50
426068	RENTON SCHOOL DISTRICT #403	06/22/2015	8,444.55
426069	Vendor Continued Check	06/22/2015	0.00
426070	REXEL INC	06/22/2015	1,227.86
426071	RHODES JR, WYMAN RONALD	06/22/2015	18.00
426072	RICOH USA INC	06/22/2015	51.90
426073	RIDDELL ALL AMERICAN SPORTS CO	06/22/2015	1,970.88
426074	SANDLAND PROMOTIONS	06/22/2015	135.34
426075	SCARFF FORD	06/22/2015	60.07

Check Nbr	Vendor Name	Check Date	Check Amount
426076	SCHETKY NW SALES INC	06/22/2015	119.87
426077	SCHOOLWIRES INC	06/22/2015	15,000.00
426078	SEA MAR COMMUNITY HEALTH CENTE	06/22/2015	11,250.00
426079	SEATTLE METRO SOFTBALL UMPIRES	06/22/2015	2,070.68
426080	SHARP BUSINESS SYSTEMS	06/22/2015	24.99
426081	SHIFFLER EQUIPMENT SALES INC	06/22/2015	41.41
426082	SIMPSON, KRISTINA	06/22/2015	40.00
426083	SOLIANI HEALTH	06/22/2015	3,900.00
426084	SOOS CREEK WATER & SEWER DISTR	06/22/2015	3,346.57
426085	SOUTH KING EARLY INTERVENTION	06/22/2015	11,600.00
426086	SOUTH KING COUNTY SOCCER REFER	06/22/2015	2,724.53
426087	STANSELL GLASS INC	06/22/2015	347.07
426088	STARR, SHARON ANN	06/22/2015	48.00
426089	STATE AUDITOR'S OFFICE LEGIS B	06/22/2015	2,201.18
426090	SUPERIOR HVAC AND ELECTRICAL	06/22/2015	574.13
426091	SUPERIOR HVAC AND ELECTRICAL	06/22/2015	1,278.98
426092	SUPERIOR HVAC AND ELECTRICAL	06/22/2015	328.50
426093	SUPPLEMENTAL HEALTH CARE	06/22/2015	5,325.00
426094	TACOMA PIERCE CO VOLLEYBALL	06/22/2015	4,469.75
426095	TCI TEACHERS CURRICULUM INSTIT	06/22/2015	230,472.86
426096	TELDATA SYSTEMS INC	06/22/2015	499.29
426097	THOMAS, NICHOLE	06/22/2015	33.95
426098	THOMAS, TIFFANY	06/22/2015	315.73
426099	THOMPSON SIGNS & SCREEN PRINTI	06/22/2015	2,385.97
426100	TIME EQUIPMENT COMPANY	06/22/2015	11.50

Check Nbr	Vendor Name	Check Date	Check Amount
426101	TODAYS CLASSROOM LLC	06/22/2015	4,052.92
426102	TOMYS INC	06/22/2015	3,241.35
426103	TOP ECHELON CONTRACTING INC	06/22/2015	3,875.03
426104	TOTAL FILTRATION SERVICES, INC	06/22/2015	6,588.66
426105	TOZIER, KAYLA M	06/22/2015	150.00
426106	TRANE U S INC	06/22/2015	304.54
426107	TRANSOURCE	06/22/2015	96.42
426108	UNIFIRST CORPORATION	06/22/2015	519.48
426109	US HEALTHWORKS MEDICAL GROUP W	06/22/2015	48.00
426110	USA MOBILITY WIRELESS INC	06/22/2015	342.23
426111	VALDOVINOS, OLGA	06/22/2015	31.57
426112	VARGAS, MONICA	06/22/2015	82.50
426113	VIRK, JAGMOHAR	06/22/2015	31.57
426114	WALMART SAMS CLUB	06/22/2015	1,120.33
426115	WASH ASSN OF EDUCATIONAL GRANT	06/22/2015	275.00
426116	WASH CEDAR & SUPPLY CO	06/22/2015	198.97
426117	WASH FLORAL SERVICE INC	06/22/2015	585.74
426118	WASH TRACTOR INC	06/22/2015	182.79
426119	WASH STATE HISTORICAL SOCIETY	06/22/2015	564.00
426120	WATER DISTRICT #111	06/22/2015	4,010.93
426121	WHITE RIVER VALLEY MUSEUM	06/22/2015	678.00
426122	WOWZERS LLC	06/22/2015	301.00
426123	WSIPC NW ESD FISCAL AGENT	06/22/2015	22,541.50
426124	COUGHLIN PORTER LUNDEEN INC	06/22/2015	1,800.00
426125	Vendor Continued Check	06/22/2015	0.00

Check Nbr	Vendor Name	Check Date	Check Amount
426126	Vendor Continued Check	06/22/2015	0.00
426127	DELL MARKETING LP % DELL USA L	06/22/2015	17,883.56
426128	EMERSON, LEO S	06/22/2015	7,200.00
426129	GOVCONNECTION INC	06/22/2015	327.39
426130	INSLEE BEST DOEZIE & RYDER PS	06/22/2015	1,112.50
426131	KING COUNTY DIRECTORS ASSN	06/22/2015	10,739.76
426132	MCKINNEY TRAILERS & CONTAINERS	06/22/2015	833.57
426133	MICRO COMPUTER SYSTEMS INC	06/22/2015	26,189.82
426134	NEELEY CONSTRUCTION & CABINET	06/22/2015	99,888.02
426135	PBS ENGINEERING & ENVIRONMENTA	06/22/2015	9,465.95
426136	PUGET SOUND ENERGY ELECTRIC	06/22/2015	4,111.26
426137	SCOTTYS GENERAL CONSTRUCTION I	06/22/2015	59,695.90
426138	TECHNOLOGY EXPRESS	06/22/2015	1,361.93
426139	WELSH COMMISSIONING GROUPS INC	06/22/2015	5,637.30
426140	WESTMARK PRODUCTS INC	06/22/2015	30,281.13
426141	ANDERSON, MEGAN	06/22/2015	10.00
426142	AUBURN FOOD BANK	06/22/2015	280.00
426143	AUBURN SCHOOL DIST 408 **	06/22/2015	1,230.85
426144	AUBURN SCHOOL DIST 408 **	06/22/2015	460.00
426145	AUBURN SENIOR HIGH CULINARY AR	06/22/2015	420.00
426146	BARRY, CARLA LEE	06/22/2015	25.00
426147	BELYAVSKIY, VASILIIY P	06/22/2015	20.00
426148	BUST A MOVE DJ	06/22/2015	400.00
426149	CHAD DOWLING PRODUCTIONS	06/22/2015	570.00
426150	COOK, TERRI E	06/22/2015	200.00

Check Nbr	Vendor Name	Check Date	Check Amount
426151	COSTCO	06/22/2015	1,979.73
426152	DECARTERET DESIGNS LLC	06/22/2015	240.00
426153	DK CUSTOM INK	06/22/2015	820.00
426154	DORIAN STUDIO INC	06/22/2015	2,292.66
426155	DOWNING, PAMELA RENEE	06/22/2015	28.46
426156	DUGANS INCORPORATED	06/22/2015	502.61
426157	EK BEVERAGE COMPANY	06/22/2015	178.00
426158	FUNRENT	06/22/2015	2,546.53
426159	GREEN RIVER MUSIC EDUCATORS AS	06/22/2015	440.00
426160	HELMAN, SANDRA	06/22/2015	125.00
426161	HERFF JONES YEAR BOOK PAYMENTS	06/22/2015	50,944.99
426162	IMAGE MASTERS INC	06/22/2015	386.87
426163	JOSTENS INC	06/22/2015	1,169.12
426164	KOBI ACADEMY	06/22/2015	31.00
426165	LANE, ANNETTE J	06/22/2015	300.00
426166	NELSON, DEBRA JEAN	06/22/2015	573.85
426167	NW CASCADE INC	06/22/2015	245.00
426168	NYS, NICOLE DEEANA	06/22/2015	75.00
426169	PACIFIC NW THEATRE ASSN INC	06/22/2015	327.49
426170	PACIFIC PUBLISHING COMPANY	06/22/2015	421.71
426171	PACIFIC WELDING SUPPLIES	06/22/2015	211.56
426172	PRAXAIR DISTRIBUTION INC	06/22/2015	28.52
426173	PRUDEN, BRITTANIE	06/22/2015	573.85
426174	SANCHEZLLANES, JAZMIN CUATLAYO	06/22/2015	27.50
426175	SANDLAND PROMOTIONS	06/22/2015	758.29

Check Nbr	Vendor Name	Check Date	Check Amount
426176	SCHOLASTIC BOOK CLUBS INC	06/22/2015	2,828.38
426177	SEATTLE OFFICIALS WOMENS BASKE	06/22/2015	914.05
426178	SKILLSUSA OF WASHINGTON	06/22/2015	600.00
426179	TACOMA PIERCE CO VOLLEYBALL	06/22/2015	1,304.28
426180	TAYLOR PUBLISHING COMPANY	06/22/2015	4,543.55
426181	TH DESIGNS	06/22/2015	248.50
426182	TIEDEMAN, TRICIA DAWN	06/22/2015	101.01
426183	TUIA, JACK STAR	06/22/2015	55.00
426184	WALMART SAMS CLUB	06/22/2015	480.01
426185	WASH STATE HISTORY MUSEUM	06/22/2015	440.00
426186	WEST CENTRAL DISTRICT III	06/22/2015	187.00
426187	WEST COAST PLATEN COMPANY	06/22/2015	271.80
426188	WHITE RIVER SCHOOL DIST #416	06/22/2015	250.00
426189	ACOSTA, ALLEN AND UNIV OF WASH	06/22/2015	500.00
426190	ADAMO, CHLOE AND COLUMBIA COLL	06/22/2015	500.00
426191	ADKINSON, DIANA AND GRCC	06/22/2015	500.00
426192	ALI, SULEKHA AND UNIV OF WASH	06/22/2015	450.00
426193	ANDREOTTI, CELESTE AND GRCC	06/22/2015	500.00
426194	ANNIS, JOSEPH AND WA STATE UNI	06/22/2015	500.00
426195	APODACA, JACOB AND HIGHLINE CC	06/22/2015	500.00
426196	ARESU, KENDALL AND UNIV OF PUG	06/22/2015	1,000.00
426197	ARNOLD, TYLER AND WA STATE UNI	06/22/2015	850.00
426198	AYERS, HALEY AND SEATTLE PAC U	06/22/2015	1,000.00
426199	BAILEY, SARAH AND EASTERN WA U	06/22/2015	500.00
426200	BAKER, JONNA AND PACIFIC LUTHE	06/22/2015	200.00

Check Nbr	Vendor Name	Check Date	Check Amount
426201	BALMES, REYMART AND WASH STATE	06/22/2015	500.00
426202	BARTRO, KAYLYNN AND GRCC	06/22/2015	2,000.00
426203	BRIONES, PATRICK AND GRCC	06/22/2015	250.00
426204	BROOKS, MELISSA AND EASTERN WA	06/22/2015	150.00
426205	BROWN, JUSTINA AND SEATTLE PAC	06/22/2015	850.00
426206	BUI, KEVIN AND UNIV OF WASHING	06/22/2015	500.00
426207	CAMPBELL, DAISHA AND UNIV OF W	06/22/2015	1,000.00
426208	CAMPBELL, RANDY AND CENTRAL WA	06/22/2015	1,000.00
426209	CERRILLO, MASON AND WASHINGTON	06/22/2015	500.00
426210	CHELEMEDOS, JORDAN AND GRCC	06/22/2015	1,000.00
426211	CHENG, IRENE AND WASHINGTON ST	06/22/2015	300.00
426212	CLOWERS, MARRISA AND WESTERN W	06/22/2015	450.00
426213	COLLINS, ALVON AND GRCC	06/22/2015	500.00
426214	CORREA, ADRIAN AND TACOMA CC	06/22/2015	1,000.00
426215	CRUZ, NIKI AND UNIV OF WASHING	06/22/2015	1,000.00
426216	DUNNE, PAYTON AND UNIV OF WASH	06/22/2015	500.00
426217	EARHART, KAITLIN AND BELLEVUE	06/22/2015	500.00
426218	ELFEGHIH, AKRAM AND HIGHLINE C	06/22/2015	1,000.00
426219	EMRU, SARAH AND UNIV OF WASHIN	06/22/2015	1,000.00
426220	ESPINO, ALFREDO AND WASH ST UN	06/22/2015	500.00
426221	ESTRELLA, JAMIE AND GRCC	06/22/2015	1,000.00
426222	FAIRCHILD, CAMERON AND SEATTLE	06/22/2015	100.00
426223	FERRELL, IAN AND PACIFIC LUTHE	06/22/2015	500.00
426224	FOFOGA, KATELYN AND UNIV OF WA	06/22/2015	500.00
426225	FORSBERG, BEAU AND GRCC	06/22/2015	250.00

Check Nbr	Vendor Name	Check Date	Check Amount
426226	FRIES, ALEXIS AND GRCC	06/22/2015	500.00
426227	FULFORD, JESSICA AND UNIV OF W	06/22/2015	3,000.00
426228	GANDHI, TARUN AND UNIV OF WASH	06/22/2015	500.00
426229	GARCIA-PINON, JOSE AND WA STAT	06/22/2015	250.00
426230	GARCIA-ROSALES, JASMINE AND GR	06/22/2015	500.00
426231	GEISS, SPENCER AND VIRGINIA MI	06/22/2015	600.00
426232	GLEASON, ALEX AND EDMOND CC	06/22/2015	1,500.00
426233	GREEN, KATIE AND MONTANA ST UN	06/22/2015	100.00
426234	GREEN, KELSIE AND PACIFIC LUTH	06/22/2015	100.00
426235	GUTHRIE, KATELYN AND GRCC	06/22/2015	1,000.00
426236	HANCE, ROBERT AND NW NAZARENE	06/22/2015	600.00
426237	HANSEN, KATLYN AND PACIFIC LUT	06/22/2015	550.00
426238	HANSON, KAELYN AND MINNESOTA S	06/22/2015	250.00
426239	HANSON, STACEY AND HIGHLINE CC	06/22/2015	1,500.00
426240	HAPPENNY, JESSICA AND WESTERN	06/22/2015	250.00
426241	HARROLD, LEE AND SANTA CLARA U	06/22/2015	1,675.00
426242	HAWKINS, DERREL AND GRCC	06/22/2015	1,200.00
426243	HAYES, NATALIE WASHINGTON ST U	06/22/2015	750.00
426244	HEDRICK, SYDNEY AND UNV OF WAS	06/22/2015	100.00
426245	HEGGE, KARI AND GEORGE FOX UNI	06/22/2015	100.00
426246	HEILBORN, CARSON AND UNIV OF N	06/22/2015	500.00
426247	HERNANDEZ, ANDREW AND UNIV OF	06/22/2015	350.00
426248	HIGGINS, ALEXANDRIA AND PACIFI	06/22/2015	500.00
426249	HOWARD, MATTHEW AND UNIV OF WA	06/22/2015	900.00
426250	HUH, DEBORAH AND UNIV OF WASH	06/22/2015	500.00

Check Nbr	Vendor Name	Check Date	Check Amount
426251	HUHN, BEAU AND GRCC	06/22/2015	1,300.00
426252	HYTREK, NICHOLAS AND UNIV OF W	06/22/2015	1,250.00
426253	ISHAM, MADELINE AND BRIGHAM YO	06/22/2015	700.00
426254	ISOM, KYLE AND GRCC	06/22/2015	1,500.00
426255	JEFFERY, DYLAN AND UNIV OF WAS	06/22/2015	500.00
426256	JENSEN, KELLIE AND WA STATE UN	06/22/2015	500.00
426257	JENSEN, TREVOR AND COLORADO ME	06/22/2015	250.00
426258	JUNG, JIN AND GRCC	06/22/2015	500.00
426259	JOHNSON, NICOLE AND WESTERN WA	06/22/2015	900.00
426260	JOHNSON, MADISON AND UNIV OF W	06/22/2015	2,300.00
426261	JOHNSON, SHILO AND HIGHLINE CC	06/22/2015	250.00
426262	JOHNSON, KAJA AND GRCC	06/22/2015	500.00
426263	JONES, LOGAN AND GRCC	06/22/2015	300.00
426264	KAATZ, NICHOLAS AND CENTRAL WA	06/22/2015	500.00
426265	KERBS, CLAIRE AND WASH STATE U	06/22/2015	1,100.00
426266	KERR, ALIA AND WESTERN WASH UN	06/22/2015	200.00
426267	KEYES, JESSE AND UNIV OF WASHI	06/22/2015	100.00
426268	KLASEN, KYLA AND WASH STATE UN	06/22/2015	1,050.00
426269	KNUTSEN, DARCI RAE AND HIGHLIN	06/22/2015	500.00
426270	KUKAY, AUSTIN AND UNIV OF WASH	06/22/2015	1,350.00
426271	LANCASTER, MADISON AND OHIO WE	06/22/2015	1,000.00
426272	LARSON, MAKAYLA AND LE CORDON	06/22/2015	1,000.00
426273	LASHLEY, RONALD AND GRCC	06/22/2015	500.00
426274	LEVINE, LUKE AND WASH ST UNIVE	06/22/2015	500.00
426275	LIND, KELCEY AND PACIFIC LUTHE	06/22/2015	500.00

Check Nbr	Vendor Name	Check Date	Check Amount
426276	LINDELL, COLE AND SEATTLE PACI	06/22/2015	500.00
426277	LINDSEY, SAMUEL AND MONTANA ST	06/22/2015	100.00
426278	LOEKS, RILEY AND UNIV OF PORTL	06/22/2015	500.00
426279	LOPEZ, JAMILLIA AND UNIV OF WA	06/22/2015	500.00
426280	LUNA, ALEJANDRA AND RENTON TEC	06/22/2015	250.00
426281	MANNING, CASEY AND PACIFIC LUT	06/22/2015	500.00
426282	MARTINEZ-TORRES, MAURICIO AND	06/22/2015	2,000.00
426283	MASSAGLI, MADISON AND BRIGHAM	06/22/2015	750.00
426284	MAST, MEGAN AND UNIV OF WASH	06/22/2015	500.00
426285	MAY, TARA AND WESTERN WASHINGT	06/22/2015	500.00
426286	MCGATLIN-MAAS, SHANNON AND REN	06/22/2015	1,000.00
426287	MCPMAHON, ALYSSA AND UNIV OF WA	06/22/2015	2,000.00
426288	MILLANG, CALLI AND UNIV OF WAS	06/22/2015	1,000.00
426289	MUNGE, CHOLWE AND PIERCE COLLE	06/22/2015	500.00
426290	NELSON, KRISTINA AND PIERCE CO	06/22/2015	500.00
426291	NGO, DOANH AND SEATTLE UNIVERS	06/22/2015	2,000.00
426292	NGUYEN, AARON AND UNIV OF WASH	06/22/2015	100.00
426293	NGUYEN, KEVIN AND BROWN UNIVER	06/22/2015	2,850.00
426294	PAGE, BAILEY AND UNIV OF WASHI	06/22/2015	500.00
426295	PARK, GREGORY AND UNIV OF WASH	06/22/2015	1,750.00
426296	PEDERSON, JARED AND GLENDALE C	06/22/2015	500.00
426297	PEN, JUNE AND UNIV OF WISCONSI	06/22/2015	1,000.00
426298	PETERSON, ALICIA AND GRCC	06/22/2015	500.00
426299	PORTER, KYLE AND UNIV OF WASH	06/22/2015	1,100.00
426300	RAMIREZ, SUMMER AND GRCC	06/22/2015	1,100.00

Check Nbr	Vendor Name	Check Date	Check Amount
426301	RAMSAY, QUINN AND UNIV OF WASH	06/22/2015	1,250.00
426302	RECKAMP, KATELYN AND PIERCE CO	06/22/2015	500.00
426303	RICHMOND, WILLA AND UNIV OF VE	06/22/2015	100.00
426304	RIDGE, MOLLIE AND CENTRAL WASH	06/22/2015	1,000.00
426305	ROBINSON, LEXIE AND WASHINGTON	06/22/2015	500.00
426306	RUBIO SANCHEZ, CESAR AND WASHI	06/22/2015	500.00
426307	SANBORN, LINDSEY AND UNIV OF N	06/22/2015	3,000.00
426308	SANDBERG, THEODORE AND WASHING	06/22/2015	100.00
426309	SCHLEINING, MAKAYLA AND GRCC	06/22/2015	300.00
426310	SCHNEIDER, MADISON AND WEST WA	06/22/2015	500.00
426311	SHARRAH, NATHAN AND GRCC	06/22/2015	800.00
426312	SHIRLEY, TAYLOR AND ARIZONA ST	06/22/2015	400.00
426313	SIMS, MICHELLE AND UNV OF WASH	06/22/2015	500.00
426314	SINCIOCO, ARVIN AND DIGIPEN	06/22/2015	550.00
426315	SORTA, CHRISTOPHER AND UNIV OF	06/22/2015	250.00
426316	SPONEBURG, SAMANTHA AND PLU	06/22/2015	500.00
426317	STICKLE, BRANDON AND RENTON TE	06/22/2015	1,500.00
426318	STROMBERG, SPENCER AND UNIV OF	06/22/2015	150.00
426319	SUTRICK, COLLIN AND UNIV OF DE	06/22/2015	3,500.00
426320	TALL, NATASHA AND WASHINGTON S	06/22/2015	500.00
426321	TANDBERG, DEVON AND MONTANA ST	06/22/2015	500.00
426322	TATE, DAX AND UNIV OF WASH	06/22/2015	3,000.00
426323	THEIMER, CASSANDRA AND GRCC	06/22/2015	500.00
426324	TINSLEY, BRENNAN AND WASHINGTON	06/22/2015	2,500.00
426325	TRAN, TRAVIS AND UNIV OF WASH	06/22/2015	500.00

Check Nbr	Vendor Name	Check Date	Check Amount
426326	VU, VINCENT AND UNIV OF WASH	06/22/2015	1,000.00
426327	WADE, AVERY AND UNIV OF WASHIN	06/22/2015	1,650.00
426328	WALLIN, DENEILLE AND GRAND CAN	06/22/2015	100.00
426329	WATSON, AERON AND CENTRAL WA U	06/22/2015	500.00
426330	WETMORE, MITCH AND WHATCOM COL	06/22/2015	500.00
426331	WICKENKAMP, DRU AND PLU	06/22/2015	500.00
426332	WOLVERTON-TAPANG, GENE ANTHONY	06/22/2015	2,100.00
426333	WUERCH, KYLE AND CA POLYTECHNI	06/22/2015	100.00
426334	YOUNG, MARINA AND MONTANA ST U	06/22/2015	1,175.00
426335	ZUCATI, JONAH AND SEATTLE UNIV	06/22/2015	500.00
377	Computer	Check(s) For a Total of	1,345,343.06

0	Manual	Checks For a Total of	0.00
0	Wire Transfer	Checks For a Total of	0.00
0	ACH	Checks For a Total of	0.00
377	Computer	Checks For a Total of	1,345,343.06
Total For 377	Manual, Wire Tran, ACH & Computer	Checks	1,345,343.06
Less 0	Voided	Checks For a Total of	0.00
	Net Amount		1,345,343.06

F U N D S U M M A R Y

Fund	Description	Balance Sheet	Revenue	Expense	Total
10	General Fund	-264.94	2,335.23	870,977.51	873,047.80
20	Capital Projects	0.00	0.00	276,528.09	276,528.09
40	ASB Fund	0.00	2,640.20	78,426.97	81,067.17
70	Private Purpose	0.00	0.00	114,700.00	114,700.00

The following vouchers, as audited and certified by the Auditing Officer as required by RCW 42.24.080, and those expense reimbursement claims certified as required by RCW 42.24.090, are approved for payment. Those payments have been recorded on this listing which has been made available to the board.

As of June 22, 2015, the board, by a _____ vote, approves payments, totaling \$37,188.45. The payments are further identified in this document.

Total by Payment Type for Cash Account, US Bank Wire Transfers:

Wire Transfer Payments 201400747 through 201400765, totaling \$37,188.45

Secretary _____	Board Member _____
Board Member _____	Board Member _____
Board Member _____	Board Member _____

Check Nbr	Vendor Name	Check Date	Check Amount
201400747	KING COUNTY DIRECTORS ASSN	06/22/2015	3,430.65
201400748	GOSNEY MOTOR PARTS INC	06/22/2015	630.05
201400749	STAPLES ADVANTAGE	06/22/2015	5,209.53
201400750	LES SCHWAB TIRE CENTER	06/22/2015	1,038.77
201400751	KING COUNTY DIRECTORS ASSN	06/22/2015	80.97
201400752	ATC SKILLZ CAMPS LLC ALL THING	06/22/2015	8,650.00
201400753	AT & T	06/22/2015	48.29
201400754	AT & T	06/22/2015	111.11
201400755	CEDAR GROVE ORGANICS RECYCLING	06/22/2015	2,104.80
201400756	CENTURY LINK	06/22/2015	4,117.89
201400758	CITY OF AUBURN UTILITIES	06/22/2015	6,001.06
201400759	REPUBLIC SERVICES #176	06/22/2015	2,558.74
201400760	VERIZON WIRELESS	06/22/2015	206.60
201400761	COSTCO	06/22/2015	786.66
201400762	WEST COAST AWARDS & ATHLETICS	06/22/2015	1,650.52
201400763	UNITED PARCEL SERVICE	06/22/2015	76.83
201400765	REPUBLIC SERVICES #176	06/22/2015	485.98

Check Nbr	Vendor Name	Check Date	Check Amount
17	Wire Transfer Check(s) For a Total of		37,188.45

0	Manual	Checks For a Total of	0.00
17	Wire Transfer	Checks For a Total of	37,188.45
0	ACH	Checks For a Total of	0.00
0	Computer	Checks For a Total of	0.00
Total For 17	Manual, Wire Tran, ACH & Computer	Checks	37,188.45
Less 0	Voided	Checks For a Total of	0.00
	Net Amount		37,188.45

F U N D S U M M A R Y

Fund	Description	Balance Sheet	Revenue	Expense	Total
10	General Fund	2,250.80	0.00	23,850.47	26,101.27
40	ASB Fund	0.00	0.00	11,087.18	11,087.18

The following vouchers, as audited and certified by the Auditing Officer as required by RCW 42.24.080, and those expense reimbursement claims certified as required by RCW 42.24.090, are approved for payment. Those payments have been recorded on this listing which has been made available to the board.

As of June 22, 2015, the board, by a _____ vote, approves payments, totaling \$430,940.63. The payments are further identified in this document.

Total by Payment Type for Cash Account, AP Direct Dep Settlement Accou:
ACH Numbers 141502195 through 141502340, totaling \$430,940.63

Secretary _____	Board Member _____
Board Member _____	Board Member _____
Board Member _____	Board Member _____

Check Nbr	Vendor Name	Check Date	Check Amount
141502195	ABOVE AND BEYOND LEARNING INC	06/22/2015	429.04
141502196	ACADEMIC LINK OUTREACH	06/22/2015	2,076.00
141502197	ACUNA, ANDREA LOUISE	06/22/2015	80.67
141502198	AIKEN, JOHN JOSEPH	06/22/2015	123.55
141502199	ALLEN, NATALIE LYNN	06/22/2015	500.00
141502200	AMADO, SONIA	06/22/2015	18.40
141502201	ANDERSON, AMY LYNN	06/22/2015	26.13
141502202	AUBURN SCHOOL DIST REVOLVING F	06/22/2015	1,267.26
141502203	BACHELDER, PATRICIA A	06/22/2015	93.55
141502204	BARDSLEY, STACY ANNE	06/22/2015	43.75
141502205	BARKER, CAROL JEAN	06/22/2015	49.17
141502206	BERG, SARAH PATRICIA	06/22/2015	86.70
141502207	BLANSFIELD, CYNTHIA RENEE	06/22/2015	363.43
141502208	BLOUNT, DENITA M	06/22/2015	67.27
141502209	BOCK, CHRISTINA MARIE	06/22/2015	90.22
141502210	BOYD JR, LAWRENCE	06/22/2015	22.89
141502211	BUCCI, TIFFANY JEAN	06/22/2015	13.23

Check Nbr	Vendor Name	Check Date	Check Amount
141502212	BURKHAUSER, VALERIE KAYE	06/22/2015	78.10
141502213	BURT, TIFFANY ANN	06/22/2015	95.39
141502214	CALHOUN, STEVEN I	06/22/2015	301.88
141502215	CAMPBELL, JULIE D	06/22/2015	21.85
141502216	CAMPBELL, LORIE L	06/22/2015	225.00
141502217	CARLSON RAY, CAROL ANN	06/22/2015	66.26
141502218	CARSTENS, TIMOTHY ANDREW	06/22/2015	725.00
141502219	CHEW JR, CHARLES R	06/22/2015	500.00
141502220	CHOCK, RUBY WAI CHING	06/22/2015	102.16
141502221	CHURCHILL, TERI ANN	06/22/2015	27.06
141502222	CRACE, CLARK RAY	06/22/2015	199.53
141502223	CUMBERLAND THERAPY SERVICES LL	06/22/2015	5,100.00
141502224	DANIELS, DENISE CLARISE	06/22/2015	164.45
141502225	DIXON, LEIANNA ELIZABETH	06/22/2015	71.42
141502226	FALK, EMILY L	06/22/2015	643.00
141502227	FAWVER, RICHARD ALLEN	06/22/2015	86.31
141502228	Vendor Continued Check	06/22/2015	0.00
141502229	FOOD SERVICES OF AMERICA *	06/22/2015	143,281.68
141502230	FOOD SERVICES OF AMERICA **	06/22/2015	11,605.28
141502231	Vendor Continued Check	06/22/2015	0.00
141502232	Vendor Continued Check	06/22/2015	0.00
141502233	FOOD SERVICES OF AMERICA ***	06/22/2015	16,479.36
141502234	FORD, JENNIFER LINSDAY	06/22/2015	190.00
141502235	GALATI, ELIZABETH ANN	06/22/2015	66.90
141502236	GARNICA, EBONIE LEE	06/22/2015	78.55

Check Nbr	Vendor Name	Check Date	Check Amount
141502237	GORDON, SANDRA LEE	06/22/2015	48.46
141502238	GUISINGER, CHAD MICHAEL	06/22/2015	6.90
141502239	HARMAN, EMILY NICHOLE	06/22/2015	144.09
141502240	HARRIS, HEIDI NIKOE	06/22/2015	163.30
141502241	HERING-PHILLIPS, CAROL S	06/22/2015	2.88
141502242	HERNANDEZ, MARIA DE LOS ANGELE	06/22/2015	46.86
141502243	HETTERLY, ELAINE M	06/22/2015	11.50
141502244	HIDALGO, OFELIA ESTELA	06/22/2015	38.81
141502245	HOGG, ELAINE M	06/22/2015	7.52
141502246	HOKSBERGEN, MARILYN J	06/22/2015	20.82
141502247	J. DE HAVEN CONSULTING	06/22/2015	3,150.00
141502248	JACOBSMA, AMANDA CHRISTINE	06/22/2015	49.22
141502249	JAMES, AMANDA N	06/22/2015	20.63
141502250	JORDAN, GARY D	06/22/2015	225.00
141502251	KIILSGAARD, LESLIE LOUISE	06/22/2015	141.03
141502252	KIM, MIRA	06/22/2015	27.08
141502253	LAFAYETTE, MELISSA MARIE	06/22/2015	500.00
141502254	LAM, TAN VAN	06/22/2015	20.70
141502255	LEITZKE, STACY JO	06/22/2015	78.75
141502256	LEYDA, BRENDA M	06/22/2015	48.93
141502257	MARKWELL, JOHN E	06/22/2015	140.01
141502258	MASON, LISA J	06/22/2015	32.84
141502259	MATSUNO, MAKI	06/22/2015	236.75
141502260	MAUCOTEL, JEANEE	06/22/2015	77.12
141502261	MAYER, MARGARET S	06/22/2015	56.35

Check Nbr	Vendor Name	Check Date	Check Amount
141502262	MCINTYRE, LEAH A	06/22/2015	59.36
141502263	MILLER, TAMMY L	06/22/2015	36.00
141502264	MILLS GOLDBERG, AMY L	06/22/2015	64.22
141502265	MITCHELL, CYNTHIA A	06/22/2015	85.90
141502266	MOLINA, CRISHA LYNN	06/22/2015	115.00
141502267	MONROE, STEPHANIE JEANNE	06/22/2015	178.63
141502268	MULICK, PATRICK JAMES	06/22/2015	54.68
141502269	NYBO, KELLEY ANDREA	06/22/2015	255.64
141502270	OLSON, THOMAS EDWARD	06/22/2015	98.02
141502271	PETERSON, STEPHANIE LEIGH	06/22/2015	500.00
141502272	PETRIE, DELLA J	06/22/2015	102.69
141502273	PETTIT, JULIE ANN	06/22/2015	495.00
141502274	POMEROY, CATHERINE THERESE	06/22/2015	56.81
141502275	PRIDEMORE, CINDY A	06/22/2015	14.47
141502276	RICHARDS, CHERYL A	06/22/2015	62.10
141502277	RUSCH-FURNSTAHL, SHARI L	06/22/2015	71.63
141502278	SANFORD, LORI K	06/22/2015	35.00
141502279	SAXON, JAN K	06/22/2015	76.13
141502280	SCHMID, JANIE RAE	06/22/2015	5.93
141502281	SERGIS, MELISSA	06/22/2015	350.00
141502282	SHEEHAN, LORI MARIE	06/22/2015	500.00
141502283	SHU-MINUTOLI, KAREN	06/22/2015	27.60
141502284	SLATER, ROBIN SHANTELLE	06/22/2015	25.94
141502285	SMETHERAM, PHILIP N	06/22/2015	84.52
141502286	STAFFORD, DAVID LEE	06/22/2015	49.16

Check Nbr	Vendor Name	Check Date	Check Amount
141502287	STUBBLEFIELD, ANGELA DENISE	06/22/2015	76.00
141502288	SUNBELT STAFFING LLC	06/22/2015	1,800.00
141502289	SWAIM, ROBERT PAUL	06/22/2015	405.95
141502290	SWANSON, PENNI J	06/22/2015	21.85
141502291	TANNER, CORTNEY JANETTE	06/22/2015	115.00
141502292	TELFORD, HEATHER ANN	06/22/2015	650.00
141502293	TURNER, MEGAN DENISE	06/22/2015	25.59
141502294	TYSON, BRITTANY BELL JEAN	06/22/2015	27.20
141502295	Vendor Continued Check	06/22/2015	0.00
141502296	US BANK CORP PROCUREMENT CARD	06/22/2015	71,099.55
141502297	US BANK CORP TRAVEL PAYMENT	06/22/2015	9,681.88
141502298	US BANK CTE PCARDS	06/22/2015	5,526.29
141502299	WAGNER, VICKI	06/22/2015	89.99
141502300	WAY, PHILLIP R	06/22/2015	29.29
141502301	WHITE, DEBRA A	06/22/2015	136.75
141502302	WISNESS, CRYSTAL ANN	06/22/2015	500.00
141502303	US BANK CORP PROCUREMENT CARD	06/22/2015	102,421.39
141502304	ALLEN, J SCOTT	06/22/2015	240.08
141502305	AUBURN SCHOOL DIST REVOLVING F	06/22/2015	2,013.58
141502306	Vendor Continued Check	06/22/2015	0.00
141502307	AUBURN SENIOR HIGH IMPREST	06/22/2015	2,164.78
141502308	BARTELT, JEANINE	06/22/2015	175.74
141502309	BURKHALTER, ARLEEN JEAN	06/22/2015	69.04
141502310	CHAR, JAMES A	06/22/2015	67.50
141502311	CHAVEZ, LUIS C	06/22/2015	93.08

Check Nbr	Vendor Name	Check Date	Check Amount
141502312	CRAIN, LORI HELEN	06/22/2015	52.87
141502313	ECKELMAN, PATRICIA E	06/22/2015	31.98
141502314	ERIE, JANICE MAUREEN	06/22/2015	842.89
141502315	FOOD SERVICES OF AMERICA	06/22/2015	2,720.43
141502316	FOSS, KIMBERLEY RENEE	06/22/2015	807.91
141502317	GRIMM, LORI LYNN	06/22/2015	140.00
141502318	HANSEN, JESSICA LYNN	06/22/2015	54.70
141502319	JACOBS, LORI DAWN	06/22/2015	144.88
141502320	MASON, LISA J	06/22/2015	133.65
141502321	MILLER, TAMMY L	06/22/2015	100.87
141502322	MILLS GOLDBERG, AMY L	06/22/2015	48.57
141502323	MISCHKE, EMILY RAMISCAL	06/22/2015	24.99
141502324	Vendor Continued Check	06/22/2015	0.00
141502325	PIZZA TIME	06/22/2015	1,335.94
141502326	RAPHAEL, KATHLEEN L	06/22/2015	20.94
141502327	RODRIGUEZ, JESSE ANN	06/22/2015	33.72
141502328	SANDLAND, GINA M	06/22/2015	57.29
141502329	SANFORD, LORI K	06/22/2015	19.75
141502330	SARR, DIANE J	06/22/2015	74.92
141502331	SKORNIAKOFF, TRACEY DOCHERTY	06/22/2015	48.97
141502332	SLEETH, AMY JO	06/22/2015	48.41
141502333	SMETHERAM, PHILIP N	06/22/2015	207.78
141502334	Vendor Continued Check	06/22/2015	0.00
141502335	US BANK CORP PROCUREMENT CARD	06/22/2015	23,828.43
141502336	US BANK CORP TRAVEL PAYMENT	06/22/2015	8,447.64

Check Nbr	Vendor Name	Check Date	Check Amount
141502337	WARRING, PETER DALE	06/22/2015	25.00
141502338	WAY, PHILLIP R	06/22/2015	58.03
141502339	WILKINSON, LISA M	06/22/2015	5.03
141502340	WINTER, SUSAN RENEE	06/22/2015	34.09
146	ACH	Check(s) For a Total of	430,940.63

0	Manual	Checks For a Total of	0.00
0	Wire Transfer	Checks For a Total of	0.00
146	ACH	Checks For a Total of	430,940.63
0	Computer	Checks For a Total of	0.00
Total For 146	Manual, Wire Tran, ACH & Computer Checks		430,940.63
Less 0	Voided	Checks For a Total of	0.00
	Net Amount		430,940.63

F U N D S U M M A R Y

Fund	Description	Balance Sheet	Revenue	Expense	Total
10	General Fund	1,182.36	0.00	283,163.40	284,345.76
20	Capital Projects	0.00	0.00	102,421.39	102,421.39
40	ASB Fund	1,534.38	0.00	42,639.10	44,173.48

AUBURN SCHOOL DISTRICT NO. 408

FINANCIAL STATEMENTS
FOR
MAY 2015

AUBURN SCHOOL DISTRICT NO. 408
MONTHLY FINANCIAL REPORTS
TABLE OF CONTENTS

- I. Combined Balance Sheet
 - A. Governmental Funds
 - B. Trust Funds and Account Groups
- II. Budget Status Reports
 - A. General Fund
 - B. Transportation Vehicle Fund
 - C. Capital Projects Fund
 - D. Debt Service Fund
 - E. ASB Fund
 - 1. High Schools
 - 2. Middle Schools
- III. Private Purpose Trust Fund Statement
- IV. NBN Employee Benefits Trust Fund Statement
- V. Local Grants

AUBURN SCHOOL DISTRICT NO. 408
BALANCE SHEETS - GOVERNMENTAL FUNDS
May 31, 2015

	GENERAL	TRANSPORT VEHICLE	CAPITAL PROJECTS	DEBT SERVICE	ASB
ASSETS					
Cash and cash equivalents	19,169,227	1,367,016	57,193,609	9,324,200	1,626,442
Restricted Cash	27,858	3,433	120,399	37,321	5,445
Property taxes receivable	16,882,502	-41	3,742,305	6,276,007	
Accounts receivable	256,926				0
Interest receivable	0	0	0	0	0
Due from other funds	0	0	0	0	0
Due from other governments	0		88,720		
Inventory of supplies	338,851				
Prepays	0				0
Total Assets	36,675,362	1,370,408	61,145,033	15,637,527	1,631,888
LIABILITIES and EQUITY					
Liabilities:					
Accounts payable	1,659,980		24,381		23,626
Estimated Unemployment Payable	26,506				
Due to other governments	12,691	1,553	54,476	16,978	2,477
Due to other funds	0		0		0
Deferred revenue	16,882,502	-41	3,749,484	6,276,007	0
Total Liabilities	18,581,679	1,511	3,828,341	6,292,985	26,103
Equity:					
Non Spendable Fund Bal--Inven	444,925				671
Restricted for Food Services	2,096,940				
Restricted from Bond Proceeds			27,561,947		
Restricted from Levy Proceeds			7,748,421		
Restricted from Impact Fees			400,832		
Restricted for Fund Purpose		1,415,645			1,605,113
Restricted to Debt Service				1,655,164	
Assigned to Contingencies	300,000				
Assigned to Other Purposes	1,800,000				
Assigned To Fund Purposes		-46,749	21,605,492	7,689,378	
Unassigned Fund Balance	13,451,819				
Total Equity	18,093,684	1,368,896	57,316,692	9,344,542	1,605,784
Total Liabilities and Equity	36,675,362	1,370,408	61,145,033	15,637,527	1,631,888

AUBURN SCHOOL DISTRICT NO. 408
BALANCE SHEETS - TRUST FUNDS AND ACCOUNT GROUPS
May 31, 2015

	TRUST FUNDS		ACCOUNT GROUPS	
	PRIV PURP TRUST	NBN EMPLOY BENEFITS	GENERAL FIXED ASSETS	GENERAL LONG-TERM DEBT
ASSETS				
Cash and cash equivalents	603,170	128,498		
Restricted Cash	2,620	767		
Due From Other Funds	0	0		
Accounts receivable				
Interest receivable	0	0		
Fixed assets			276,544,570	
Other debits:				
Amount available in Debt Service Fund				9,344,542
Amount to be provided for retirement of general long-term obligations				115,539,686
Total Assets	605,790	129,265	276,544,570	124,884,228
LIABILITIES and EQUITY				
Liabilities:				
Accounts Payable	0	0		
Compensated absences payable				2,764,228
Due to other governments	1,187	347		
Due To Other Funds		0		
General obligation bonds payable				122,120,000
Total Liabilities	1,187	347	0	124,884,228
Equity:				
Investment in general fixed assets			276,544,570	
Fund balances:				
Assigned To Fund Purposes	604,603	128,917		
Total Equity	604,603	128,917	276,544,570	0
Total Liabilities and Equity	605,790	129,265	276,544,570	124,884,228

<p align="center">Auburn School District No. 408 General Fund Budget Status Summary</p>	
---	--

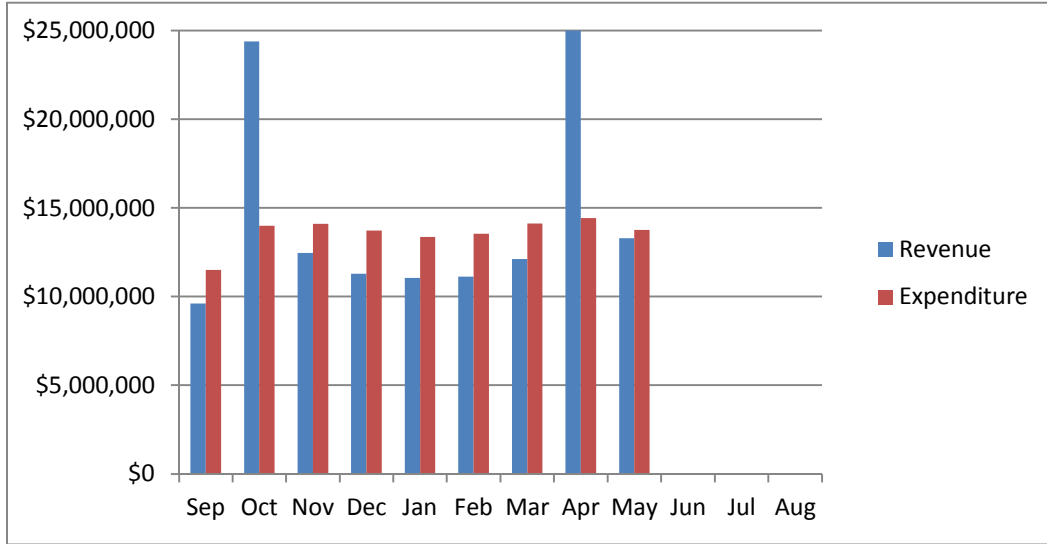
	REVENUE			EXPENDITURES			FUND BALANCE
Fiscal Year 2014 - 15	Average Cum %	Actual Cum %	Actual Monthly	Average Cum %	Actual Cum %**	Monthly Amount	Beginning 9,416,432
September	5.64%	5.63%	9,600,271	6.59%	11.23%	11,493,198	7,523,505
October	19.96%	19.93%	24,381,007	14.62%	18.99%	13,998,540	17,905,973
November	27.27%	26.57%	12,457,337	22.71%	26.78%	14,097,667	15,140,231
December	33.90%	33.18%	11,280,745	30.57%	34.44%	13,715,438	12,705,623
January	40.39%	39.91%	11,049,790	38.24%	42.20%	13,366,760	10,814,353
February	46.91%	46.82%	11,114,885	46.01%	49.17%	13,541,044	8,936,027
March	54.03%	54.20%	12,123,196	54.11%	54.11%	14,124,959	7,367,771
April	68.71%	69.23%	24,991,693	62.38%	64.91%	14,418,327	18,551,214
May	76.52%	77.04%	13,295,630	70.27%	72.61%	13,753,159	18,093,684
June							
July							
August							
			Revenue			Expenditure	Fund Balance
Anticipated - First Budget			170,274,046			174,344,494	5,962,883
Actual - At Fiscal Year End							
** Includes encumbrances.							

	REVENUE			EXPENDITURES			FUND BALANCE
Fiscal Year 2013-14	Average Cum %	Actual Cum %	Actual Monthly	Average Cum %	Actual Cum %**	Monthly Amount	Beginning 10,133,329
September	6.76%	6.51%	9,950,137	11.19%	11.15%	11,113,769	8,969,697
October	19.63%	20.36%	21,159,285	19.66%	19.15%	13,247,446	16,881,536
November	26.73%	27.23%	10,494,071	27.00%	26.90%	12,563,614	14,811,993
December	34.26%	34.39%	10,933,571	34.53%	34.40%	12,617,333	13,128,231
January	41.53%	41.28%	10,526,689	42.31%	41.97%	12,539,519	11,115,401
February	48.89%	48.60%	11,182,251	50.04%	49.91%	12,981,238	9,316,414
March	56.54%	56.29%	11,749,451	57.80%	57.60%	12,820,932	8,244,933
April	70.37%	71.31%	22,945,138	66.38%	65.65%	13,411,868	17,778,203
May	78.49%	79.14%	11,965,259	74.16%	73.50%	13,119,004	16,624,458
June	83.94%	84.41%	8,057,108	81.77%	82.10%	13,808,972	10,872,594
July	91.49%	92.10%	11,749,445	89.63%	90.25%	13,713,359	8,908,680
August	100.07%	101.48%	14,319,827	97.25%	98.14%	14,002,912	9,225,640
			Revenue			Expenditure	Fund Balance
Anticipated - First Budget			152,776,040			158,891,993	4,808,633
Actual - At Fiscal Year End			155,029,778			155,939,966	9,416,432
** Includes encumbrances.							

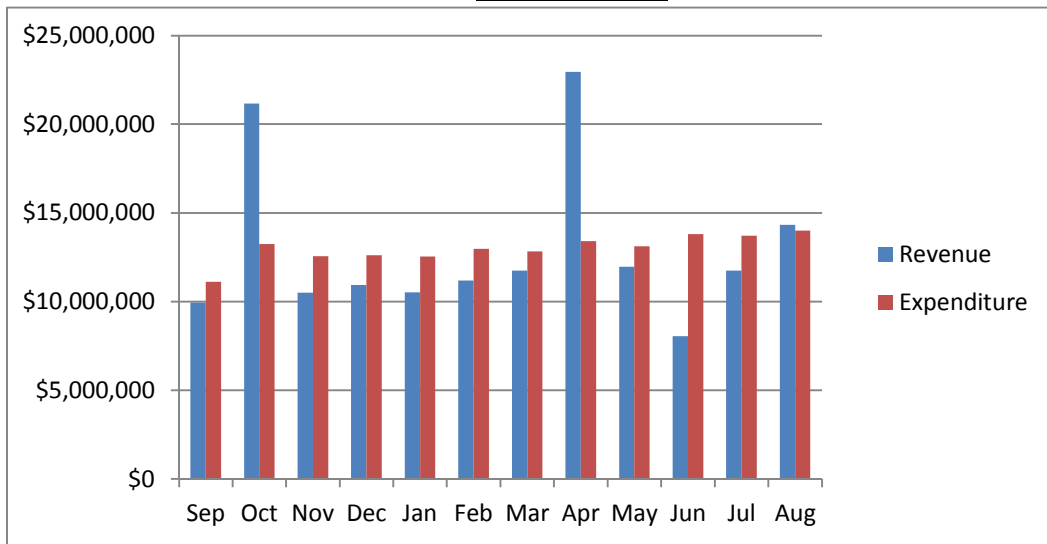
	REVENUE			EXPENDITURES			FUND BALANCE
Fiscal Year 2012-13	Average Cum %	Actual Cum %	Actual Monthly	Average Cum %	Actual Cum %**	Monthly Amount	Beginning 10,124,983
September	6.82%	6.42%	8,900,174	11.29%	11.34%	10,305,120	8,720,037
October	19.42%	20.17%	19,051,681	19.75%	19.60%	11,569,382	16,202,336
November	26.65%	27.71%	10,449,525	27.06%	27.23%	11,707,538	14,944,323
December	34.17%	34.95%	10,139,001	34.56%	34.82%	11,514,929	13,568,395
January	41.52%	41.78%	9,357,387	42.30%	42.71%	11,723,970	11,201,812
February	48.99%	48.59%	9,430,085	49.97%	50.23%	11,154,522	9,477,376
March	56.68%	56.00%	10,127,724	57.72%	58.12%	11,851,062	7,754,037
April	70.29%	70.42%	20,127,079	66.29%	65.91%	11,606,241	16,274,875
May	78.42%	79.73%	12,906,563	73.99%	74.22%	12,397,109	16,784,329
June	83.89%	84.80%	6,958,226	81.58%	82.21%	11,709,618	12,032,937
July	91.43%	92.10%	10,139,829	89.52%	90.51%	12,774,041	9,398,725
August	99.98%	101.04%	12,434,576	96.92%	97.78%	11,694,692	10,138,609
			Revenue			Expenditure	Fund Balance
Anticipated - First Budget			138,577,729			143,182,856	4,696,764
Actual - At Fiscal Year End			140,016,041			140,007,695	10,133,329
** Includes encumbrances.							

AUBURN SCHOOL DISTRICT No. 408 GENERAL FUND

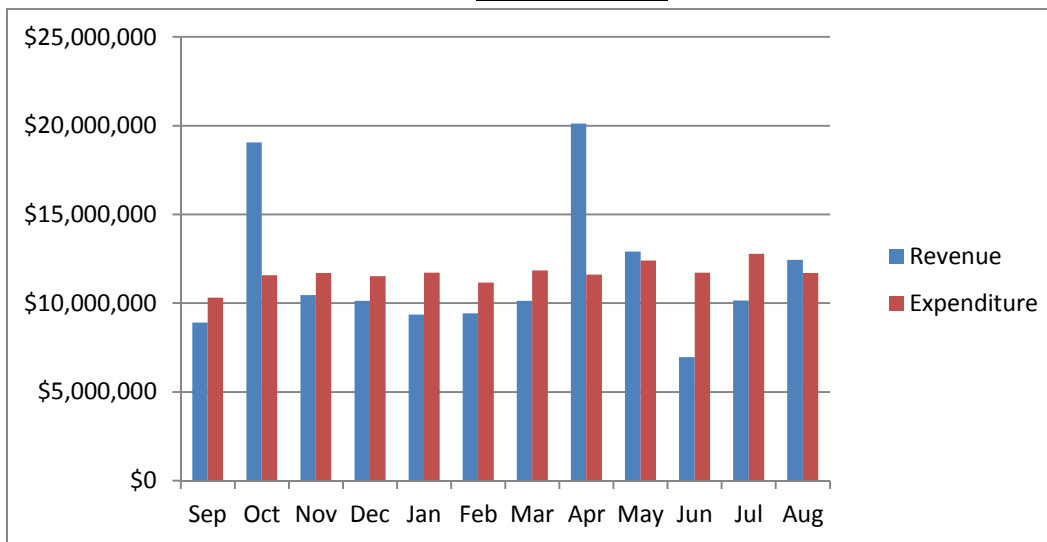
2014 - 15



2013-14



2012-13



Auburn School District No. 408
General Fund Budget Status
For the Month of May, 2015

	Annual Budget	Actual For Month	Total For Year	Encumbrance	Balance	Percent
TOTAL BEGINNING FUND BALANCE	\$ 10,033,331		9,416,432			
REVENUES AND OTHER FINANCING SOURCES						
1000 Local Taxes	33,794,082	4,657,865	33,725,703		68,379	99.80%
2000 Local Non-Tax	6,923,066	295,416	3,576,774		3,346,292	51.66%
3000 State, General Purpose	90,896,758	5,902,148	67,406,064		23,490,694	74.16%
4000 State, Special Purpose	22,611,696	1,286,356	16,939,958		5,671,738	74.92%
5000 Federal, General Purpose	8,383	-	21,667		(13,284)	258.46%
6000 Federal, Special Purpose	15,325,069	1,153,845	9,235,017		6,090,052	60.26%
7000 Revenues from Other District	612,292	-	272,237		340,055	44.46%
8000 Revenues from Other Agencies	102,700	-	3,736		98,964	3.64%
9000 Other Financing Sources	-	-	2,247		(2,247)	0.00%
Total Revenues & Other Finance Sources	170,274,046	13,295,630	131,183,403	-	39,090,644	77.04%
EXPENDITURES						
00 Regular Instruction	95,457,588	7,884,189	69,742,927	22,136,021	3,578,640	96.25%
10 Federal Stimulus	1,452,249	39,621	652,127	35,132	764,990	47.32%
20 Special Ed Instruction	20,774,578	1,783,889	15,472,052	5,177,163	125,363	99.40%
30 Vocational Instruction	6,860,021	742,093	4,677,274	1,585,751	596,996	91.30%
50&60 Compensatory Education	11,456,993	790,449	7,303,430	2,386,414	1,767,149	84.58%
70 Other Instructional Pgms	3,081,562	78,694	903,917	296,193	1,881,452	38.94%
80 Community Services	1,310,238	55,101	513,513	112,139	684,586	47.75%
90 Support Services	33,951,265	2,379,122	23,240,910	7,328,952	3,381,403	90.04%
Total Expenditures	174,344,494	13,753,159	122,506,150	39,057,764	12,780,579	92.67%
Excess Revenues/Other Financing Sources						
Over (under) Expend & Oth Financing Uses	(4,070,448)	(457,529)	8,677,252			
Total Ending Fund Balance	\$ 5,962,883		18,093,684			
Ending Fund Balance Accounts						
GL 821 Restricted for Carryovers						
GL 828 Restricted for Food Services	-		2,096,940			
GL 840 Nonspendable Fund Bal - Inv	-		444,925			
GL 875 Unrsrvd Dsgntd-Conting	-		300,000			
GL 888 Assigned to Other Purposes	-		1,800,000			
GL 890 UnRsrvd Undsgntd Fnd Bal	5,962,884		13,451,819			
Total Ending Fund Balance	\$ 5,962,884		\$ 18,093,684			

Auburn School District No. 408
Capital Projects Fund Budget Status
For the Month of May, 2015

	Annual Budget	Actual For Month	Total For Year	Encumbrance	Balance	Percent
TOTAL BEGINNING FUND BALANCE	\$ 74,402,644		\$ 69,083,979			
REVENUES AND OTHER FINANCING SOURCES						
1000 Local Taxes	6,261,416	1,037,182	6,234,985		26,431	99.58%
2000 Local Non-Tax	1,857,503	63,875	1,197,002		660,501	64.44%
3000 State, General Purpose		-	-		-	0.00%
4000 State, Special Purpose		2,043,016	4,299,472		(4,299,472)	0.00%
5000 Federal, General Purpose		-	-		-	0.00%
6000 Federal, Special Purpose		-	-		-	0.00%
7000 Revenues from Other District		-	-		-	0.00%
8000 Revenues from Other Agencies		-	-		-	0.00%
9000 Other Financing Sources	-	-	-		-	0.00%
Total Revenues & Other Financing Sources	8,118,919	3,144,073	11,731,459	-	(3,612,540)	144.50%
EXPENDITURES						
10 Sites	3,013,535	89	23,844	-	2,989,691	0.79%
20 Buildings	40,774,497	4,311,770	21,362,092	13,238,034	6,174,371	84.86%
30 Equipment	6,000,000	278,209	1,227,958	30,268	4,741,774	20.97%
40 Energy	-	8,055	884,852	90,414	(975,265)	0.00%
50 Sales & Lease Expenditures		-	-	-	-	0.00%
60 Bond Issuance Expenditures		-	-	-	-	0.00%
90 Debt		-	-	-	-	0.00%
Total Expenditures	49,788,032	4,598,124	23,498,746	13,358,716	12,930,570	74.03%
Excess Revenues/Other Financing Sources Over (under) Expend. & Oth Financing Uses	(41,669,113)	(1,454,051)	(11,767,287)			
Total Ending Fund Balance	\$ 32,733,531		\$ 57,316,692			
Ending Fund Balance Accounts						
GL 861 Restricted from Bond Proceeds	35,415,193		27,561,947			
GL 862 Restricted from Levy Proceeds	(10,644,680)		7,748,421			
GL 863 Restricted from State Proceeds	5,902,644					
GL 865 Restricted from Other Proceeds	(78,335)		(0.01)			
GL 866 Restricted from Impact Fees	(5,980,210)		400,832			
GL 889 Assigned to Fund Purpose	8,118,919		21,605,492			
GL 890 UnRsrvd Undsgntd Fnd Bal						
Total Ending Fund Balance	\$ 32,733,531		\$ 57,316,692			

Auburn School District No. 408
ASB Fund Budget Status
For the Month of May, 2015

	Annual Budget	Actual For Month	Total for Year	Encumb	Balance	Percent
TOTAL BEGINNING FUND BALANCE	\$ 1,090,784		\$ 1,428,831			
REVENUES AND OTHER FINANCING SOURCES						
1000 General Student Body	1,753,002	30,942	592,400		1,160,602	33.79%
2000 Athletics	243,220	10,620	201,973		41,247	83.04%
3000 Classes	254,953	29,031	94,352		160,601	37.01%
4000 Clubs	1,757,792	95,321	975,203		782,589	55.48%
6000 Private Moneys	102,460	5,842	52,197		50,263	50.94%
Total Revenues & Other Financing Sources	4,111,427	171,756	1,916,125	-	2,195,302	46.60%
EXPENDITURES						
1000 General Student Body	1,302,322	36,927	401,132	30,115	871,075	33.11%
2000 Athletics	346,921	19,756	226,239	23,795	96,888	72.07%
3000 Classes	279,273	20,422	72,702	6,672	199,899	28.42%
4000 Clubs	1,989,710	142,230	997,159	98,117	894,434	55.05%
6000 Private Moneys	107,076	9,389	41,940	1,956	63,180	41.00%
Total Expenditures	4,025,302	228,724	1,739,172	160,655	2,125,475	47.20%
Excess Revenues/Other Financing Sources Over (under) Expend. & Oth Financing Uses	86,125	(56,968)	176,953			
Total Ending Fund Balance	\$ 1,176,909		\$ 1,605,784			
Ending Fund Balance Accounts						
GL 819 Restricted for Fund Purpose	1,176,909		1,605,113			
GL840 Nonspendable-Inven/Prepaid			671			
GL 889 Assigned to Fund Purposes						
Total Ending Fund Balance	\$ 1,176,909		\$ 1,605,784			

Auburn School District No. 408
Debt Service Fund Budget Status
For the Month of May, 2015

	Annual Budget	Actual For Month	Total Year	Encumbrance	Balance	Percent
TOTAL BEGINNING FUND BALANCE	\$ 6,430,043		\$ 6,422,376			
REVENUES AND OTHER FINANCING SOURCES						
1000 Local Taxes	15,217,563	1,723,840	15,152,275		65,288	99.57%
2000 Local Non-Tax	48,100	2,936	18,728		29,372	38.94%
3000 State, General Purpose		-	-		-	0.00%
5000 Federal, General Purpose		-	-		-	0.00%
6000 Federal, Special Purpose		-	-		-	0.00%
9000 Other Financing Sources		-	-		-	0.00%
Total Revenues & Other Financing Sources	15,265,663	1,726,776	15,171,003		94,660	99.38%
EXPENDITURES						
Matured Bond Expenditures	8,795,000	-	8,795,000	-	-	100.00%
Interest on Bonds	6,808,036	-	3,453,568	-	3,354,468	50.73%
Interfund Loan Interest		-	-	-	-	0.00%
Bond Transfer Fees	100,000	-	269	-	99,731	0.27%
Arbitrage Rebate		-	-	-	-	0.00%
Underwriter's fees		-	-	-	-	0.00%
Total Expenditures	15,703,036	-	12,248,837	-	3,454,199	78.00%
Other Financing Uses		-	-			
Excess Revenues/Other Financing Sources Over (under) Expend. & Oth Financing Uses	(437,373)	1,726,776	2,922,166			
Total Ending Fund Balance	\$ 5,992,670		\$ 9,344,542			
Ending Fund Balance Accounts						
GL 810 Reserved For Other Items			-			
GL 830 Reserved For Debt Service	6,430,043		1,655,164			
GL 889 Assigned to Fund Purposes	(437,373)		7,689,378			
GL 890 UnRsrvd Undsgntd Fnd Bal			-			
Total Ending Fund Balance	\$ 5,992,670		\$ 9,344,542			

Auburn School District No. 408
Transportation Vehicle Fund Budget Status
For the Month of May, 2015

	Annual Budget	Actual For Month	Total For Year	Encumb	Balance	Percent
TOTAL BEGINNING FUND BALANCE	\$ 2,148,615		\$ 2,151,834			
REVENUES AND OTHER FINANCING SOURCES						
1000 Local Taxes	-	-	17		(17)	0.00%
2000 Local Non-Tax	10,768	1,104	7,445		3,323	69.14%
3000 State, General Purpose		-	-		-	0.00%
4000 State, Special Purpose	723,485	-	-		723,485	0.00%
5000 Federal, General Purpose		-	-		-	0.00%
8000 Revenues from Other Agencies		-	-		-	0.00%
9000 Others Financing Sources		-	13,573		(13,573)	0.00%
Total Revenues & Other Financing Sources	734,253	1,104	21,035	-	713,218	2.86%
EXPENDITURES						
Type 30 Equipment	2,077,290	-	385,903	-	1,691,387	18.58%
Total Expenditures	2,077,290	-	385,903	-	1,691,387	18.58%
Excess Revenues/Other Financing Sources Over (under) Expend & Oth Financing Uses	(1,343,037)	1,104	(364,868)			
Total Ending Fund Balance	\$ 805,578		\$ 1,786,966			
Ending Fund Balance Accounts						
GL 819 Restricted for Fund Purposes	2,148,615		1,415,645			
GL 889 Assigned to Special Fund Purposes	(2,147,747)		(46,749)			
GL 890 UnRsrvd Undsgntd Fnd Bal			-			
Total Ending Fund Balance	\$ 868		\$ 1,368,896			
Reconciling Difference Per Reprot	804,710		(418,069)			

AUBURN SCHOOL DISTRICT No. 408

ASB FUND

MAY, 2015

HIGH SCHOOLS

	Auburn High	Auburn Mountainview	Auburn Riverside	West Auburn	TOTAL
	401	405	408	504	
BEGINNING BALANCE	\$ 218,605.95	\$ 268,672.33	\$ 354,629.62	\$ 9,036.77	\$ 850,944.67
REVENUES	\$ 473,361.84	\$ 510,556.43	\$ 501,676.16	\$ 1,840.33	\$ 1,487,434.76
EXPENDITURES					
General	\$ 48,684.82	\$ 90,504.10	\$ 63,102.18	\$ 739.14	\$ 203,030.24
Athletics	95,804.34	34,881.83	73,335.56	-	204,021.73
Classes	19,514.20	22,602.02	14,872.23	-	56,988.45
Clubs	318,270.45	303,626.61	281,967.05	1,364.80	905,228.91
Private Monies	9,000.15	5,316.86	6,246.38	318.53	20,881.92
TOTAL EXPENDITURES	\$ 491,273.96	\$ 456,931.42	\$ 439,523.40	\$ 2,422.47	\$ 1,390,151.25
TRANSFERS					
General	\$ 37,632.64	\$ 32,203.84	\$ 45,130.56	\$ 1,500.00	\$ 116,467.04
Athletics	(26,559.76)	(7,184.89)	(17,104.70)	-	(50,849.35)
Classes	(1,142.00)	(675.00)	(1,360.60)	-	(3,177.60)
Clubs	(9,930.88)	(24,343.95)	(26,499.26)	(1,500.00)	(62,274.09)
Private Monies	-	-	(166.00)	-	(166.00)
TOTAL TRANSFERS	\$ -	\$ -	\$ -	\$ -	\$ (0.00)
OVER/ (UNDER)	\$ (17,912.12)	\$ 53,625.01	\$ 62,152.76	\$ (582.14)	\$ 97,283.51
ENDING BALANCE	\$ 200,693.83	\$ 322,297.34	\$ 416,782.38	\$ 8,454.63	\$ 948,228.18

AUBURN SCHOOL DISTRICT No. 408

ASB FUND

MAY, 2015

MIDDLE SCHOOLS

	Cascade	Mt. Baker	Rainier	Olympic	TOTAL
	202	207	206	203	
BEGINNING BALANCE	\$ 70,318.09	\$ 55,379.27	\$ 103,268.24	\$ 102,871.70	\$ 331,837.30
REVENUES	\$ 56,227.20	\$ 62,492.36	\$ 67,266.75	\$ 41,636.25	\$ 227,622.56
EXPENDITURES					
General	\$ 25,700.03	\$ 10,232.97	\$ 19,158.93	\$ 13,875.18	\$ 68,967.11
Athletics	5,412.55	5,133.89	4,994.04	6,676.37	22,216.85
Classes	-	463.20	-	-	463.20
Clubs	16,044.10	30,062.88	30,795.72	11,942.47	88,845.17
Private Monies	4,530.02	3,082.91	341.64	173.28	8,127.85
TOTAL EXPENDITURES	\$ 51,686.70	\$ 48,975.85	\$ 55,290.33	\$ 32,667.30	\$ 188,620.18
TRANSFERS					
General	\$ 7,422.78	\$ 15,148.98	\$ 8,200.00	\$ 6,719.00	\$ 37,490.76
Athletics	(6,000.00)	(7,468.77)	(8,000.00)	(6,659.72)	(28,128.49)
Classes	1,908.63	(2,705.14)	-	-	(796.51)
Clubs	(3,331.41)	(4,975.07)	(200.00)	(59.28)	(8,565.76)
Private Monies	-	-	-	-	-
TOTAL TRANSFERS	\$ -	\$ -	\$ -	\$ (0.00)	\$ (0.00)
OVER/ (UNDER)	\$ 4,540.50	\$ 13,516.51	\$ 11,976.42	\$ 8,968.95	\$ 39,002.38
ENDING BALANCE	\$ 74,858.59	\$ 68,895.78	\$ 115,244.66	\$ 111,840.65	\$ 370,839.68

AUBURN SCHOOL DISTRICT NO. 408
PRIVATE PURPOSE TRUST FUND STATEMENT
May 31, 2015

REVENUES:

InvestED	21,508
----------	--------

Scholarship Donations:

6003 Daan Ansingh	1,000
6007 Pat Kuhlman	1,000
6016 Auburn Community	74
6023 Optimist Scholarship	3,300
6065 ARHS Counseling	1,002
6068 Burton/Moberg	1,000
6076 Hirose Memorial	100
6082 Dave Goethals	1,000
6083 Juan Huseby	4,000
6084 Bonnie Olson	220
6085 Walker Mens	1,000
6088 Volney Wolters	1,500
6089 Watt Memorial	300
6103 Linda Cowan	200
6107 AHS Hanan	983
6111 AHS K Strand	150
6112 AHS S Leonard	350
6121 Andrew Bonwell	500
6201 AMHS Booster	8,494
6204 Auburn Noon Lions	2,000
6402 American Legion	400
6406 AAWP	800
6407 AEA	2,000
6409 PEO Scholarship	1,000
6410 PSEA	1,000
6411 Surgical Association	1,500
6414 WAHS Bus Barn	1,500
6501 Invest Ed- AHS	7,253
6502 Invest Ed - Casc	1,529
6503 Invest Ed - Oly	1,529
6505 Invest Ed - AMHS	3,251
6520 Invest Ed - RAI	650
6521 Invest Ed - WAHS	881
6527 Invest Ed - MTB	1,126
6528 Invest Ed - ARHS	5,289
7003 Pioneer Shoe Fund	2,150
7004 ARHS Win Wishes	772
7005 AHS Booster Club	5,175
7006 Native Am Students	29,410
7010 Food Bank	423
Total Scholarship Donations	95,811
Interest	2,160
Total Revenues	97,971

EXPENDITURES:

InvestED	17,571
6007 Pat Kuhlman	-150
6016 Auburn Community	375
6405 AAEOB	400
6501 Invest Ed- AHS	7,088
6502 Invest Ed - Casc	1,512
6503 Invest Ed - Oly	944
6505 Invest Ed - AMHS	2,158
6520 Invest Ed - RAI	537
6521 Invest Ed - WAHS	881
6527 Invest Ed - MTB	309
6528 Invest Ed - ARHS	4,143
7003 Pioneer Shoe Fund	1,004
7004 ARHS Win Wishes	712
7005 AHS Booster Club	5,938
7006 Native Am Students	29,136
7009 Chinook Shoe Fund	261
7010 Food Bank	423
Total Expenditures	<u>55,670</u>
Excess of Revenue over (under) Expenditure	42,301
Fund Balance - Beginning of the Year	<u>562,302</u>
Fund Balance - Year to Date	<u><u>\$ 604,603</u></u>

AUBURN SCHOOL DISTRICT NO 408
NBN Employee Benefits Trust Fund Statement
May 31, 2015

ADDITIONS:

Contributions from Plan Members	\$ 216,959.00
Investment Earnings	<u>280.11</u>
Total Additions	<u>217,239.11</u>

DEDUCTIONS:

Benefits Claims	192,133.70
State Program Fees	<u>350.00</u>
Total Deductions	<u>192,483.70</u>

NET DEDUCTIONS	24,755.41
-----------------------	-----------

Net Assets at Beginning of Year	<u>104,161.93</u>
Net Assets Year To Date	<u><u>\$ 128,917.34</u></u>

AUBURN SCHOOL DISTRICT NO. 408
Local Grants Received in May, 2015

Donor	Recipient	Amount
Auburn Public Schools Foundation	ASD	\$1,000.00
Communities in Schools	Gildo Rey	\$1,554.24
Communities in Schools	Dick Scobee	\$1,692.60
Communities in Schools	Terminal Park	\$1,780.84
Communities in Schools	Cascade	\$2,123.99
Communities in Schools	Olympic	\$1,707.44
Communities in Schools	Mt. Baker	\$1,055.52
PTA	Evergreen	\$700.00
Box Tops	Chinook	\$641.30
Deanna Tompkins	Lake View	\$1,360.00
BECU School	Lea Hill	\$1,461.60
Boeing	Lea Hill	\$3,000.00
BECU Grant	Pioneer	\$2,500.00
Kroger Rebates	Terminal Park	\$35.96
BECU - ISTS	Terminal Park	\$2,500.00
US Again	Hazelwood	\$42.48
Fidelity	Hazelwood	\$85.31
PTA	Hazelwood	\$68.89
Parents McTeacher Night	Hazelwood	\$265.00
PTA	Lakeland Hills	\$5,000.00
US Again	Rainier	\$33.90
BECU Grant	Mt. Baker	\$2,450.00
Century Link - Keegan Ryan	Mt. Baker	\$4,697.14
Puget Sound EDS/Bill & Melinda Gates Foundation	ASD	\$3,240.00
Total		<u><u>\$38,996.21</u></u>

**AUBURN SCHOOL DISTRICT NO. 408
RESOLUTION NO. 1206**

**A RESOLUTION TO ADOPT THE GENERAL FUND, CAPITAL PROJECTS FUND, DEBT
SERVICE FUND, ASSOCIATED STUDENT BODY PROGRAM FUND, AND
TRANSPORTATION VEHICLE FUND BUDGETS FOR THE
2015-16 FISCAL YEAR.**

WHEREAS, the General Fund Budget, the Capital Projects Fund Budget, the Debt Service Fund Budget, the Associated Student Body Program Fund Budget and the Transportation Vehicle Fund Budget have been prepared in accordance with the existing law, and

WHEREAS, the notice of the preparation of said budgets and the public hearings have been duly published according to aforesaid laws, and

WHEREAS, the public had an opportunity to be heard for or against any section of the budgets at the board meeting held on June 22, 2015 at the James P. Fugate Administration Center, 915 Fourth Street Northeast, Auburn, Washington, and

WHEREAS, the Board of Directors have received and reviewed the detailed budgets as presented,

NOW, THEREFORE, BE IT RESOLVED to officially adopt the 2015-16 budgets as follows:

A. General Fund	\$195,187,148
B. Transportation Vehicle Fund	1,660,000
C. Capital Projects Fund	58,899,500
D. Debt Service Fund	13,107,213
E. Associated Student Body Fund	4,256,116

ADOPTED this 22nd day of June, 2015.

**BOARD OF DIRECTORS
AUBURN SCHOOL DISTRICT NO. 408**

ATTEST:

Secretary to the Board

1. Approval of Minutes

Recommendation: That the minutes be approved.

Recommendation: That the board hold a special board meeting on Monday, July 27, 6:00 p.m., to conduct their annual evaluation for the 2014-15 school year.

4. Executive Session